

Serving the Island's



Town, Parish & Community Councils

The IWALC Bulletin

July 2022

Your questions answered, your experiences shared... news and information from across the Island...links and updates...

Your IWALC Matters!!

Message from the Chair

One of the functions of the Bulletin, and of IWALC as a whole, is to increase members' awareness of important topical issues. Over the last year we have addressed several such issues, including housing, health and wellbeing services, and community-led planning. In this month's Bulletin we look at two other important issues: environmental sustainability and equality and diversity.



Environmental sustainability was the focus of our June topic meeting. The session included presentations on the implications of the Island's designation as a biosphere reserve, the Isle of Wight Council's Climate Change and Environment Strategy, known as Mission Zero, and ways of reducing energy consumption in Island homes. Participants were shocked to hear that it takes an area four times the size of the Island to support our current life-style. However, we were encouraged to learn that reducing energy consumption in homes has a positive impact not only on carbon emissions but also on fuel poverty. There was also a presentation by Ventnor Town Council's IWALC representatives, who explained how their Council has established an Environment and Sustainability Forum to consider ways in which the Council can promote sustainability. They encouraged other councils to take similar action.

You will find a full report of the meeting below under IWALC News. I would urge all councils to read this report and put the issue on the agenda of your next meeting. Please let us know about any action you decide to take. This is arguably the most critical issue facing not only our Island, but the whole planet.

Equality and Diversity is a topical issue this week, with IW Pride returning to Ryde on Saturday 16 July after two years' absence due to Covid. It is also the focus of our next training event, which will be held on 20 July. The session will consider councils' obligations under the Equality Act and the implications of this for their practical operation. The Act provides protection for people with any of a number of 'protected characteristics', including age, gender, race, religion, sexual orientation and disability.

In order to encourage readers to think about these issues, this issue includes information on the number of women councillors in our 33 local councils. In total, 38% of councillors were women at the time of the survey (May this year). I have been unable to find comparable national data (the average in higher tier councils is 35%) but there is obviously room for improvement. Moreover, there is a great deal of variation between councils.

Our hard-working editor, Jill Webster, will be taking a well-earned rest in August, so the next issue of the Bulletin will be published in September. In the meantime, we would like to wish you all a happy and healthy summer.

Diana Conyers (Chair)

DISCLAIMER.

The function of the Bulletin is to inform members of issues and happenings that are of concern. All articles are taken in good faith and the opinions expressed in the Bulletin are those of the submitter. Submitted articles do not necessarily reflect our views. We cannot take responsibility for any legal queries resulting from these.

We reserve the right not to publish any contributions that for any reason we consider inappropriate.

IWALC News...

Contact - IWALC County Officer, Heather Rowell (heatheriwalc@gmail.com)

Website - www.iwalc.org - Check out our Facebook page too.

The Bulletin - Communications Officer - Jill Webster - jwebster.iwalc@outlook.com

Don't forget, there will be no Bulletin in August. The deadline for the September edition will be August 31st - thank you.

June Topic Meeting

Our June Topic Meeting, which was held at the Riverside Centre on 30 June, focused on Environmental Sustainability. The purpose was to consider what local councils can do to help create a sustainable environment.

There were 21 participants from 14 local councils. Councillor Jonathan Bacon, Cabinet Member for the Environment and himself a parish councillor, welcomed participants and introduced the presenters.

The first presentation, by Ian Boyd of Arc Consulting, was on the implications of the Island's designation as a UNESCO biosphere reserve. Ian pointed out that the reserve, which includes most of the Solent and some parts of the adjacent Hampshire and Dorset coastline, is only one of five reserves in the UK. He explained that the aim of a biosphere reserve is to promote and sustain both biological and cultural diversity. He emphasised that each part of the Island is different and suggested that our 33 local councils are the ideal vehicle for promoting and supporting this sense of local identity.

The second presentation was by Rob Sauven, a local consultant in renewable energy who is taking a key role in helping to drive forward the IW Council's new Climate Change and Environment Strategy. Rob introduced the Strategy, known as Mission Zero, and explained the



practical actions being taken to promote and implement it. He emphasised that our current way of life is unsustainable and that there is need for change in all aspects of the Island's way of life. Participants were informed that it takes an area four times the size of the Isle of Wight to support our current lifestyle. He encouraged us to think of future generations and envisage the benefits of a carbon-zero world.

This was followed by a presentation by Vince Wedlock-Ward, a Wroxall parish councillor and director of a community interest company (CIC) called Future Isle of Wight, which helps people access funding to improve the energy efficiency of their homes. He explained how his company is about to launch an ECO4 funded scheme, which will help thousands of Island homes reduce their energy bills from August this year, thereby both reducing carbon emissions and taking people out of fuel poverty.

The final presentation was by Ventnor Town Councillors, Julie Hutchison and Steve Cooper. They described how Ventnor Town Council has established an Environment and Sustainability Forum, which meets monthly to consider ways in which the Council can promote environmental sustainability. They encouraged other councils to take similar action.

The presentations were followed by a lively discussion, which included the implications for the draft Island Planning Strategy and the Island's possible designation as some sort of 'island park', but focused on the need to increase awareness among all sectors of the Island's population and the role of local councils in so doing. It was agreed that IWALC will encourage all its members to put this on the agenda of their next meeting.

For further information, readers can access the IW Council's Mission Zero strategy at: <https://www.iow.gov.uk/azservices/documents/2570-Mission-Zero-Climate-and-Environment-Strategy-2021-2040-final.pdf>

IWALC AGM

The IWALC AGM will be held on Thursday 28 July at the Riverside Centre. This is the meeting at which new officers and representatives to outside bodies are elected. The meeting is open to all IWALC member councillors. It will be preceded by an informal meeting of mayors and chairs. Information about both meetings has already been circulated to participants.

Meetings with Isle of Wight Council

The June meeting with members of the IW Cabinet was reported in last month's Bulletin. The next meeting will be at 12 on Thursday 14 July.

Meeting with Bob Seely MP

This month's meeting with the MP, Bob Seely, was held on 30 June. There were 23 participants. The MP began with a brief update on his recent activities, which included proposing a number of amendments to the forthcoming Levelling Up and Regeneration Bill and discussions with the Secretary of State for Levelling Up, Housing and Communities about the 'Fair Funding' review of local government funding. He indicated that the IW Council may get more than it does at present but not as much as requested.

Questions focused on the following topics:

1. Planning issues, including possible amendments to the Levelling Up Bill, progress with the draft Island Planning Strategy (IPS), the proposed Levelling Up bid for the 'greenway' from Ryde to Yarmouth and specific planning applications. In response, Bob said that the most important thing was to get the IPS in place as quickly as possible, in order to give the Island more control over development.

2. Health services, including access to GPs and the status of the new surgery in Newport. Bob agreed to follow up both issues.

3. Transport, including other ways of restoring railways following the recent failure of the Council's bid for government funding and liaison with the Cabinet over the forthcoming Local Transport Plan (LTP). Bob affirmed his commitment to work with the Cabinet and agreed to arrange a meeting on the LTP.

4. Implications of the Island's exclusion from a possible Hampshire County Council bid for 'devolution deal' funding under the future Levelling Up Bill. Bob responded that it was likely that only two-tier authorities would be eligible and that he had got the impression that the IW Council would not be interested in joining.

Training

The next training event will be on Wednesday 20 July from 6.00 to 8.00 pm at the Riverside Centre. The subject will be Equality and Diversity.

The course will look at local councils' legal obligations under the Equality Act, including their obligations to councillors, staff and the general public, and the practical implications of this. It is very important that councils are aware of these obligations.

The session will be delivered by Mandy Ainsworth, a lecturer at the ATP Apprenticeship College, with support from Emily Brothers, a Sandown Town Councillor with both lived experience and professional knowledge of disability rights. Mandy has delivered a similar course to Newport and Carisbrooke Community Council, which was very well received.

In line with IWALC policy, the course will be free for councillors and staff of member councils but there will be a cancellation charge of £50 for anyone who fails to attend without giving apologies. There will be a fee of £75 for participants from non-member councils.

Requests to participate should be made through your clerk to Jill Webster at jwebster.iwalc@outlook.com

Gender Equality: IW Local Councils

Council	Men	Women	Total	% women
Arreton	5	3	8	37.5
Bembridge	4	6	10	60.0
Brading	6	2	8	33.3
Brighstone	7	0	7	0
Chillerton and Gatcombe	3	2	5	40.0
Cowes	10	6	16	37.5
East Cowes	5	3	8	37.5
Fishbourne	2	4	6	66.7
Freshwater	6	8	14	57.2
Godshill	1	5	6	83.3
Gurnard	4	5	9	55.5
Havenstreet and Ashey	2	4	6	66.7
Lake	5	5	10	50.0
Nettlestone and Seaview	7	3	10	30.0
Newchurch	4	3	7	42.8
Newport and Carisbrooke	9	5	14	35.7
Niton and Whitwell	4	6	10	60.0
Northwood	7	1	8	12.5
Rookley	5	1	6	16.7
Ryde	10	6	16	37.5
St Helens	5	1	6	16.7
Sandown	7	5	12	41.7
Shalfleet	3	3	6	50.0
Shorwell	6	0	6	0
Ventnor	9	2	11	18.2
Wootton Bridge	7	3	10	30.0
Wroxall	3	3	6	50.0
Yarmouth	6	2	8	33.3
Total IWALC members	152	97	249	39.0
Calbourne	2	3	5	60.0
Chale	2	2	4	50.0
Shanklin	8	4	12	33.3
Totland	5	3	8	37.5
Whippingham	6	0	6	0
Total non-members	23	12	35	34.3
Total IW	175	109	284	38.4

Note: This data was obtained from information on council websites in May this year. Since there have been a number of changes in membership since then, there may be some errors. Please let us know if the information for your council is incorrect.

IWALC AGM

Thursday July 28th at 7pm

The Riverside Centre, Newport

ALL Councillors from IWALC Member Councils are invited to attend.

No meeting in August.

Press Releases.....

<https://onthewight.com/how-can-local-parish-town-and-community-councils-influence-the-scale-and-type-of-development-in-their-communities/>

<https://drive.google.com/file/d/1UPs7aIDE8wc8AJ-4CMniGgkbXJ6nMZ62/view> (Pages 11 and 28)

<https://www.islandecho.co.uk/what-can-local-parish-town-and-community-councils-do-to-help-create-a-sustainable-environment/>

<https://www.islandecho.co.uk/training-event-details-how-community-led-plans-can-influence-local-development/>

<https://onthewight.com/isle-of-wight-parish-town-and-community-councillors-learn-more-about-how-create-a-sustainable-environment/>

Monthly Meetings for IWALC with IWC Cabinet Members

These take place on the second Thursday of the month, remotely, via Teams between noon and 1pm. They are well worth finding an hour of your day for. All IWALC Councillors and staff are invited to take part in these informal but informative meetings.



Teams log-in details are circulated to all Clerks prior to the meetings.

Meetings with Bob Seely

All Councillors and staff of IWALC Member Councils are invited to take part in these online meetings.

The Zoom log-in details will be circulated to Clerks in advance.

In addition, IWALC continues to be included in the regular Heads of Organisations meetings with Bob Seely,



Please remember to check IWALC's Facebook page regularly for more NALC information and news.

If your Council has a Facebook page, please let Jill know and we can re-post your news etc to IWALC's Facebook page.

IWALC Training

WHAT?

Equality & Diversity

WHEN?

Wednesday July 20th from 6pm to 8pm

WHERE?

The Riverside, Newport

WHO?

Training is open to all Clerks, Councillors and staff.

HOW?

Please book your place through your Clerk, with Jill

COST?

Free for all Member Council staff and councillors.

£75 per person from non-member councils

BUT!!

£50 charge for any person who fails to attend without giving prior notice.

BOOK BEFORE?

As soon as possible!!



Hot off the Press!!

Some advance notice of a two-part Training Course -
Basic Training for New Councillors.

The two sessions will be held on Wednesday September 7th and Wednesday September 14th

The venue will be The Riverside Centre, and our trainer will be Sue Chilton.

More details, including times, will be circulated shortly.**

(**Subject to change due to any Covid restrictions)

The Island's Housing Crisis: What Can We Do?

A comment from Councillor Peter Whiteman.

I advocate that we go back to a mass council housing building programme as we had after the Second World War, using local contractors and sourcing materials from IOW suppliers.

Will the current review of the Island plan help? No. It only puts in place where and what types of properties are needed, and locations. It does not in any way encourage the applicant or developer to build.

Should we stop the 'Right to Buy' on housing association property? Yes. It depletes the market of rental properties.

Can we stop the investors buying all the cheap property as second homes and stopping the first time buyer getting on the ladder? No. But we could, if the rules were altered.

Will the proposed Modular units help solve the problem? It may, as it did with prefabs after the Second World War. It just seems to me it's only 'talk' as no locations or orders have been placed.

There has been some talk and rhetoric from the IW Council Regeneration Team about this problem, but as yet, no action as they seem to want to put all their efforts into regenerating the high streets or old brownfield sites, or maybe they have a very large pot on the back burner.

Finally! This IW Council administration is trying to make headway - the sound bites are good. But we need housing **NOW**, folks, not in a year or two.... but **TOMORROW**.

Kind Regards,
Cllr Peter J Whiteman (Vice Chair Chillerton
& Gatcombe Parish Council)



Goodbye...and Hello!

In recent weeks, Niton & Whitwell Parish Council have said Goodbye to their Clerk, Karen McLaren, and Hello to new Clerk, Chris Burt.

And long-time Clerk to three of our Parish Councils, Mike Taplin, retires as Clerk to Wroxall Parish Council at the end of July. And we say Hello to new Clerk, Jackie Gallop.



News from NALC

A Message from Jonathan Owen, NALC's Chief Executive

We have a new chair, elected by our national assembly members, Cllr Keith Stevens from East Sussex. He will build on the excellent work of his predecessors, Sue Baxter (Worcestershire) and Ken Browse (Devon).

He has set out his clear priorities:

To ensure that local councils are rightly recognised and respected as the first tier of local government.

NALC is working to ensure that we have a strong voice in parliament, the government, and political parties. We also need them to hear, rather than just listen to what we say, particularly about the sector's potential. He has already met with government ministers and other parliamentarians including levelling up Minister Kemi Badenoch and the Speaker of the House of Commons, Sir Lyndsey Hoyle; who incidentally began on Adlington Town Council in Lancashire. We also have an active parliamentary forum – the All-Party Parliamentary Group on Local Democracy - championing the sector, ably chaired by MPs Richard Holden and Cherilyn Mackrory.

We are pressing them, on your behalf, for remote meetings to continue, for appropriate sanctions where poor standards require them and for the sector to be recognised for their role in the levelling up and regeneration bill currently before Parliament. We hope that bill will strengthen neighbourhood planning, provide funding to improve the sector, make it easier to set up new councils and put our councils at the heart of place shaping.

NALC would ask you to continue to support those arguments locally, highlighting to your MPs and local media the brilliant things you are doing and pressing MPs to support these campaigns in Parliament. And of course, please do flag up any areas where you would like to see legislative change to make your work easier through motions from your county association to our Policy Committee.

We also work with other national organisations on your behalf. For example, through the rural coalition we are seeking to ensure rural areas are not overlooked and the loss and absence of facilities are addressed including access to broadband, affordable housing, and health care. With other members of the rural coalition, we are also pressing nationally for banks to understand and support the sector more responsively.

To champion good governance in councils supported by material from county associations and NALC.

We are working closely with the society of local council clerks on a project to promote civility and respect providing resources to enable councils to do that. We will be inviting councils to sign a pledge to commit to delivering this. An important way to demonstrate good governance is to participate in the local council award accreditation scheme and I am pleased that the number of councils getting their award continues to increase. Elections are central to governance and one of NALC's key campaigns is to encourage more people from all backgrounds to get involved in their local council – the "make a change, become a councillor" campaign. There are resources to help this including twenty videos highlighting why people have become councillors.



To highlight the role and potential of councils with the media, public and other national bodies.

Thanks to the brilliant work councils do we have plenty of case studies of how they are helping to address some of the big challenges facing the country including building dementia friendly communities, promoting healthier communities, tackling loneliness, and helping meet the climate emergency. We publish these on our website and use them to demonstrate to government, the media, and other national bodies the potential the sector has to help them with the big challenges the country faces.

You can find these case studies and other support to help you address these issues on our website and our impressive programme of national remote events are designed to give you insights from national experts and leaders. These have gone well and have had over five thousand attendees over the last year.

I hope this material will inspire you and encourage you to raise the ambition of your council. And please let us know what you are doing, share case studies, media coverage and participate in our annual star councils' awards.

We continue to work closely with the Local Government Association, which represents counties, districts and unitaries, as it is vital that our role and status as the first tier of local government is fully recognised.

A media highlight this year was the full-page article in the Financial Times on 14 March 2022 entitled "The potential of parish politics" which commented on the growing role of the sector and its potential to revitalise democracy and level up the country. A copy is available on our website.

If we continue to work together to improve the sector and demonstrate its potential then I am sure we will go from strength to strength and deliver for local communities.

Some facts and stats:

NALC works with forty-three county associations to represent the interests of 10000 local councillors and 100000 councillors – currently around 8500 are in membership.

Its website receives around seven hundred thousand page views per year and its twitter account 2m impressions.

It deals with around five thousand queries a year from councils and county associations

There are around 700 councils accredited or working towards the local council award scheme and 3500 clerks qualified in CiLCA

Its suite of guides, legal topic notes and other publications have been downloaded over 250000 times by members.

You can sign up for a regular bulletin and newsletter on its work here <https://www.nalc.gov.uk/nalc-newsletter>

Jonathan Owen (Chief Exec)

Fortnightly Meetings for County Officers

Last week, Jim Babbington, vice-chair of the National Association of Civic Officers (NACO), joined the meeting. He provided updates on the protocol for the death of a senior national figure and answered questions on some of the practical actions that will be needed when such an event occurs. The protocol is available to all members of NACO — membership is free and open to local councils and county association employees.

Report from NALC National Assembly Meeting

Return to Face-to-Face meetings

The first face-to-face meeting of the NALC National Assembly for over two years took place on Tuesday 12th July. It was branded as a "Grand Reunion" and all CALCs were allowed to send an additional member to the event. I was accompanied by Councillor John Graney from Brading Town Council. It was held at the impressive new offices of CCLA, one of NALC's principal sponsors in the heart of the City of London. Business included a report back from the Task and Finish Group on NALC's governance. I am disappointed at the lack of progress on this matter and in particular the failure to look seriously at the substantive constitutional changes needed which I reported to the last IWALC Executive meeting. I will, if re-elected as IWALC's national representative, keep pushing for the changes I believe to be necessary.

There was a report from the Smaller Councils' Committee, in particular dealing with a report compiled following a national survey of "smaller councils," and I would like to thank those councils on the Island which responded to the survey. A range of recommendations have been made, some with financial implications and these will be considered by the relevant committees when budgets are set. One significant issue flagged up is the definition of a "smaller council." Currently, the definition is any council which is not classified as a "larger council" ie, any council with an electorate of under 6,000. It is my view that this should be changed to a much lower electorate limit and also that precept/budget sizes should be a factor.

The meeting received a financial report . The good news is an increase in income which shows an element of organic growth in subscriptions and trading income. Plans in 2023-24 are for a 3% increase in subscription, which, against a background of near double digit inflation, is reasonable. The Vice-Chair (Finance) continues to express concern that the deadline for payment of 80% of subscriptions by 30th June could potentially lead to cash flow issues for NALC, and he wishes to see it moved back to 31st May. I do not share his pessimism which has never materialised and I will continue to oppose any such change.

After lunch we had a number of presentations from partners including NALC's President, Baroness Scott of Needham Market, who praised the work of our sector and stated she will continue to press for councils to be allowed to make their own decisions as to whether they meet remotely, in person or in hybrid form.

The final formal item, before a networking opportunity, was a presentation on the "Civility and Respect project which is being undertaken jointly by NALC, SLCC (Society of Local Council Clerks) and OVW (One Voice Wales). Councils are being asked to sign up to the "Civility and Respect Pledge" under which councillors are expected to "treat other councillor, clerks, all employees, members of the public, representatives of partner organisations and volunteers with civility and respect in their roles." Whilst accepting the good intentions of this project I have, since its inception, expressed misgivings about the way it is being undertaken, not to mention the costs involved. I also believe that it fails to fully acknowledge that civility and respect is a two-way street.

Bob BLEZZARD (July 2022)

News from Member Councils

Arreton Parish Council
Bembridge Parish Council
Brading Town Council
Brighstone Parish Council
Chillerton & Gatcombe Parish Council
Cowes Town Council
East Cowes Town Council
Fishbourne Parish Council
Freshwater Parish Council
Godshill Parish Council
Gurnard Parish Council
Havenstreet & Ashey Parish Council
Lake Parish Council
Nettlestone & Seaview Parish Council

Newchurch Parish Council
Newport & Carisbrooke Community Council
Niton & Whitwell Parish Council
Northwood parish Council
Rookley Parish Council
Ryde Town Council
Sandown Town Council
Shalfleet Parish Council
Shorwell Parish Council
St Helen's Parish Council
Ventnor Town Council
Wootton Bridge Parish Council
Wroxall Parish Council
Yarmouth Town Council

Gurnard Parish Council

Planning applications have been numerous again over the last month. On some, the Parish Council's view is upheld; when it's not, then we have to be philosophical. However all councillors and many residents were saddened by the granting of planning for an



extension of the ribbon development along Baring Road on the edge of the Jordan Valley. This development will impact on the rural nature of the village and devalues the fully adopted Gurnard Neighbourhood Plan. There is some concern that other developments will be given the nod as long as the IPS remains in stasis.

Despite being held on a Friday and not very well advertised, a public meeting organised by Southern Water drew nearly 40 people to Gurnard Village Hall on 24th June. The full presentation is available on the GPC website, Summer Demand Risk and Preparations ([gurnardpc.co.uk](https://www.gurnardpc.co.uk)) (<https://www.gurnardpc.co.uk/wp-content/uploads/2022/07/Gurnard-Slides.pdf>) A GPC Beach Working Party will be convened for September and at least two councillors are attending a workshops with Southern Water before the next full council meeting. There is considerable local concern over water quality and GPC will continue to hold the company to account even if the Beach Working Group is not solely focused on water quality. SW have also provided emergency numbers to be called if beach users are concerned about a pollution event and the council is considering the best way to advertise these.

Two councillors from Gurnard attended the very interesting IWALC June 30th topic meeting on the Biosphere Reserve Status and its potential impact on the Island; a report has been circulated as well as the first two presentations. It was particularly interesting to hear about how another local council is focused on working towards meeting the Biosphere objectives already. Thank you IWALC for arranging this meeting.

Cllr Penny Acton

Fishbourne Parish Council



The Royal Victoria Yacht Club (RVYC) in Fishbourne held its annual Open Day for People with Disabilities on Saturday 2nd July. The RVYC has held an Open Day for people with disabilities since 1981. This is the day when the club opens its door to enable a wide range of Island residents with disabilities to get out on the water in a variety of members' boats. This year, there were two specially-adapted craft which enabled wheelchair users to enjoy time on the water.

Supported by Fishbourne Parish Council and other local organisations, 80 people from all over the Island were able to enjoy trips. It was a fantastic day and an amazing experience for all who were involved!

Lindsey Hood, Parish Clerk



Chillerton & Gatcombe Parish Council

This month the Parish is looking at the maintenance of its Play Area. After a recent inspection there are a number of areas that need attention.

We continue to be concerned about the speed of vehicles, especially tractors, coming down Main Road. There is a zone at the south end of Chillerton that is particularly dangerous. The Council is concerned that the IWC is continuing not to consider specific speeding issues until its Island wide review.

Cllr Nigel Phillips (Chairman)



Cowes Town Council

While we normally like to share good news stories, we must not forget that a lot of a town and parish council's time and public money is spent on reacting to vandalism in our towns and villages. Vandalism of our public toilets and other managed areas is all too frequent. Graffiti is sadly on the increase. It spoils the appearance of our town – a town in which we have a lot of pride and want to look attractive to both visitors and our residents. The lighter evenings

bring more young people to our public areas, unfortunately resulting in an increase in vandalism. We have had to clear up burnt debris at Northwood Recreation Ground where fires have been lit in the public toilets and under the skate park ramps. There must be witnesses to this behaviour which is being carried out in daylight in such a well-used public place, yet no reports have been made to the Police. We need to encourage witnesses to report antisocial behaviour and vandalism directly to the Police so that Police resources can be dedicated to these areas. We are working closely with our local Police team and Environment Officers to identify and educate those responsible.

At our June Town Council meeting, Councillors discussed the issue of noisy cars and motorcycles throughout the town which are a disturbance, especially late at night. Noise pollution is a national issue. Speed limits are regularly exceeded and drivers are putting local residents at risk. We have registered our concerns with the Police, IW Council's Environment Officers and the Island's MP and encourage other Town and Parish Councils to do the same to raise the importance of this issue.

Our Projects Committee is discussing this year's Christmas arrangements for decorating the town and also the refurbishment of the public conveniences at Medina Road (by the Floating Bridge).

We have received the completed Local Cycling and Walking and Infrastructure Plan (LCWIP) for the Cowes, Gurnard and Northwood area, commissioned in partnership with Gurnard and Northwood Parish Councils, and compiled by People Powered CIC, working closely with the IW Council. We look forward to discussing in detail the identified improvements to our walking and cycling routes in the town and links to our neighbouring towns and villages.

We entered our High Street area for the Wight In Bloom 2022 competition, under the 'Pride of Place Floral Project' category and eagerly await the results.

Kate Gibbs (Asst Town Clerk)

Photograph of our summer plants, courtesy of Cllr Michael Paler.



East Cowes Town Council

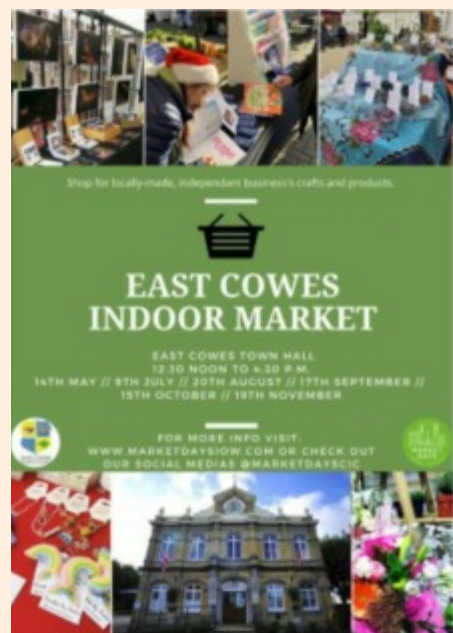
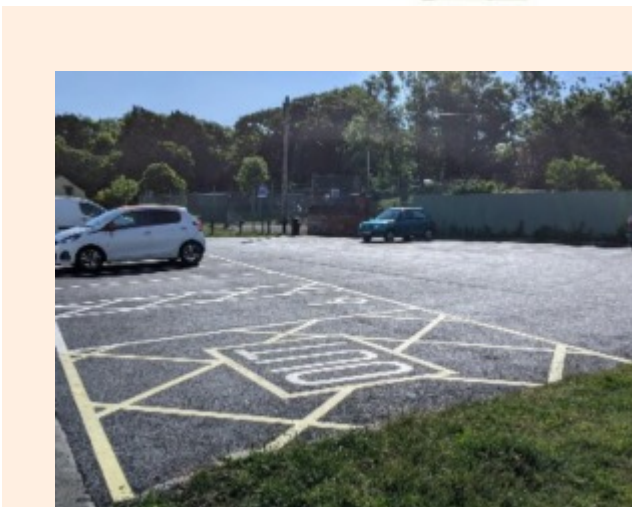
After the ORP Blyskawica and Blitz commemorations and a packed weekend of Platinum Jubilee events from beacon lighting to tea dances, live screenings, tree planting and a spectacular picnic the focus has returned to the completion of the new community hub and library building project. This new building, adjacent to the Town Hall, will be called The East Side Curve. It comprises of a meeting room that can accommodate 12 people, an accessible Clerk's office, a large multi-purpose space, outdoor seating area, three fully accessible toilets – one inside and two public toilets on Osborne Road. It is due to open to the public during August and will be a great addition to the town providing a modern and inviting venue for a host of activities and interests as well as an informal space to meet.



Regular monthly events are now up and running with a market in the Town Hall and a volunteer-led community cinema. A dedicated band of litter-picking volunteers are also keeping the town tidy.

As well as ongoing maintenance of the many facilities under the auspices of East Cowes Town Council, recent improvements include works to the paddling pool and the re-surfacing of the Esplanade car park.

Claire Gale (Asst Clerk)



The East Side Curve – exterior and floor plan (top left). ORP Blyskawica & Blitz Commemoration events (top right).
Re-surfaced car park (above). Market Poster (above right).

Yarmouth Town Council

Wight Nature Fund Book launch and Schools Presentation

Yarmouth Town Council contributed a grant of £2000 to the publication of a book entitled 'Yarmouth and Shalfleet Coastal Town and Country Parish.'

On Saturday July 2nd Wight Nature Fund hosted a tea party at CHOYD (Yarmouth Community Centre) for the launch of the 200 page book celebrating the natural environment and the wildlife, the history and heritage found in the two parishes. Wight Nature Fund first undertook management of Mill Copse 32 years ago, with both Steve Cowley, who is taking the Chair of WNF again in 2022, and with Richard Grogan, Team Leader of AONB, advising. At the launch, Richard Grogan highlighted the success of the conifer clearance work which has ensured the return of wildflowers, such as bluebells, and wildlife, such as red squirrels.

Grants from IW AONB (Area of Outstanding Natural Beauty) team, Delphie Lakeman Trust and Yarmouth Town Council ensured that a copy of the book could be given to each child at Yarmouth and Shalfleet C of E Primary Schools to commemorate the Queen's Platinum Jubilee. Proceeds from the sale of the book will be used for conservation work in Mill Copse, Yarmouth.

Copies of the book, full of fascinating facts about the area, and compiled by Jill Cowley, are available @ £15.00 from Holdings of Yarmouth, Medina Bookshop Cowes or direct from WNF. For more information contact jandscowley@googlemail.com.

Cllr Steve Cowley (Mayor)



Steve Cowley, Chairman of Wight Nature Fund, cuts the cake with Mary Edmunds who was instrumental in setting up the charity 32 years ago.



Above- Children of Yarmouth Primary School were presented with books by Steve Cowley, Chair WNF with Richard Grogan of AONB and other WNF Trustees.



Right- Lord Lieutenant, Susie Sheldon presented the books to Shalfleet CofE Primary School children with WNF Chair Steve Cowley

Ventnor Town Council



Ventnor Day 2022

This year's Ventnor Day was an amazing afternoon as hundreds came to Ventnor Park to share, enjoy and celebrate the town's rich community life. There were stalls from around 50 community groups and voluntary sector organisations and stalls from around 50 local businesses, crafters and artists as well as the Isle of Wight Donkey Sanctuary. Food and drinks were provided by Crave Ice Cream, Lady Scarlett's Tea Parlour, Stripped Burgers, Sweet Charlie's Crepes and Tee in The Park. Entertainment providers were Ventnor Darlings, Greg and the Bears, The Hillmans, The Slow Cats, Moonshine Border Morris, Andy Roberts, Bethan John, Lucan, Tink Beadle and Ventnor Theatre Group.

The event also featured the first performance in their home town by Ventnor Comic Jazz Band after their recent successful appearance in the Queen's Platinum Jubilee Pageant.

Radio Solent's Visit to Ventnor

Presenter Lucy Ambache came in the radio car on Saturday 2 July both our Paddling Pool where, as Radio Solent's picture shows, she interviewed our Mayor before moving on to talk with the Carnival's Chair and Beauty Queen amid the Park's Ventnor Day as part of Lucy's Clued Up! Programme. The interviews are available on BBC Sound at 2 hours 24 minutes into Saturday's 10am slot for the first, 2 hours 49 minutes for the other.

New Public Toilet Nears Completion

Residents and visitors will soon have access to a new public toilet with facilities for people with disabilities readily accessible in the Central Car Park. It's just waiting for the utilities to complete the joining up of their services and we expect it to be open and ready for use in the middle of July.

Round Britain Cycle Race

On Sunday 11 September the Island will host 19 world leading cyclist teams and over 100 professional riders in the final stage – Ryde to the Needles – of this year's Round Britain race.

We met with Sarah and Jo who are contracted by Visit Isle of Wight to develop community engagement with the event that is *expected to be going through Ventnor around 2pm that afternoon. As the Visit Isle of Wight Web site says: The steep spiralling hills in and out of Ventnor will make for exciting viewing. Fast hair pin declines down to the beach and almost vertical corkscrew climbs back out of the town will have spectators cheering the riders on and holding their breath at the same time!*

The riders are expected to leave Ryde between 10 and 11am with the finish being at the Needles around four hours later. We've asked for advance information about any road closures and been assured that a full information pack about the event will be with us in good time.

Glyphosate Use

The Town Council meeting of 13 June concluded its recent discussions of the use of the controversial weed killer Glyphosate with the Minute:

It was proposed by Councillor Dave Logan, seconded by Councillor Stephen Cockett and unanimously resolved to:

- i) confirm the decision of its meeting of 11 April to ban the use of Glyphosate the areas within the Town Council's Grounds Maintenance Contract excluding the Cascade; and
- ii) agree the estimated costs of changing to a safe alternative as identified in paragraph 2c of Report 49/22 for this meeting.

David Bartlett (Clerk)

Shalfleet Parish Council

The Parish Council has supported the village centres in Shalfleet, Newbridge and Wellow recently for the Queen's Jubilee. This has helped these centres to reconnect with residents and friends. The coffee mornings have been visited by Live Well and Early Help Service. These centres are exploring the possibility of hubs. Our contact has been Hayley Snow, through Aspire, Pan Together and the W W Sports and Community Centre and she can be approached by email - reception@iweh.org.uk



Shalfleet Parish Council

The New Inn management at Shalfleet has indicated that it would like to consider it becoming a Community Asset.

A Community Led Housing meeting of Councillors and interested future stakeholders was held with John Pritchett from CLH, with a view to possible developments in the Parish.

The housing proposal for 70+ dwellings is having another consultation with parishioners and council this July. There is a need to create and establish a local archive on line. It would be helpful if any Parish with such experience could make contact, with our clerk, Sally Woods initially.

Cllr Helena Hewston

Freshwater Parish Council



Regrettably I have to report that the Parish's project to replace the Gate Lane public toilets has been delayed.

The Contractors are waiting for the electricity company to make the site safe prior to the demolition of the existing toilet block. The Parish does not have a date available for when these works will be completed. Councillors have received reports of maintenance issues within the current toilet block and have taken the decision to provide portaloos rather than pay for repairs following advice from our Clerk, Heather Rowell.

At our meeting on the 5th July, it was agreed to send out the tender for the proposed skate and pump track on the Stroud playing field. We are hopeful that the tender will be well-received by businesses that specialize in this type of development.

The Freshwater Library is again having to cope with the ingress of badgers within the library grounds and much more worryingly under the building itself. We have accepted a quotation from the Badger Action Group for Badger Exclusion Works and look forward to the works being completed as soon as possible.

Cllr Natalie Thomas raised the idea of a food pantry within the Parish earlier this year. Cllr Thomas has continued to develop this idea and is now hoping to obtain a grant to support the start-up costs. Given the success of the three food pantries already on the Island, we are excited by the work Cllr Thomas is doing for the benefit of our community.

The Parish Strategy Group is now chaired by Cllr Lindsay Becker and supported by vice-chair Dominic Hicklin. The Group is continuing to prepare for the updating of our Neighbourhood Plan. Cllr Becker is in the final stages of producing our Housing Needs Survey, which we hope to roll out before the end of this year.

The Parish Council continues to face the reality of meeting the needs of our community over the difficulty of raising the revenue to meet the expenditure. We are facing some tough funding decisions in the next few months at a very difficult financial time for the recipients of those funds. Sadly our Town, Parish and Community Councils are not protected or immune to the rise in the cost of living. Our discussions for next year's budget have already begun and some hard questions are being asked.

Cllr Emma Cox

Ryde Town Council



Ryde Town Council are delighted to have joined the pledge in supporting the Armed Forces Community. Councillor and IWC Armed Forces Champion, Ian Dore said: "With RTC signing the Armed Forces Covenant, what is being said is we recognise and respect the Armed Forces, their families and the incredible work they do. Being a signed-up member means treating others with fairness and respect which is the backbone of any society. It's also about ethical employment and good HR practice. They have made a commitment to the nation; this is a commitment to them."

"A lot of what goes on to keep up safe at night, is done in the shadows or in faraway lands. For that we need focused individuals to step up to the plate. There is never any credit, no public recognition and you never get to hear about it. Members of the Military need to know that they will be looked after and treated fairly and equally when they leave. Any entity that signs the Armed Forces Covenant is saying to them yes. Yes, you will be."

The Town Council encourages all organisation to sign up in order to demonstrate their support for the Armed Forces Community. All organisations, public, private, and voluntary, no matter what size are welcome to pledge their support. For more details on how to join please visit www.armedforcescovenant.gov.uk

Full press release can be found on our website - www.rydetowncouncil.gov.uk/armed-forces-covenant-signing/

We are delighted to announce that Network Ryde have successfully been nominated for the Tesco Community Grants Scheme. If successful, we could receive up to £1500 to fund fun activities during school holidays for young people to participate in, without a cost to them and their families. Tesco stores taking part are: Ryde Extra, Lake Express, Wootton Bridge Express and Ventnor High St. Express.

Voting has started now, until 30th September 2022.

Please share this post far and wide, and help us to deliver even more wonderful activities for the Island's young people.

Allan Bridges
(Business Development Manager & Deputy Clerk)



Other News...

News in Brief from the IWC

Carers from across the Island enjoyed a number of events to mark National Carers Week.

The Isle of Wight Council, with its partner, Carers IW, set out to showcase the extensive range of support and activities available to local unpaid carers. The annual awareness campaign is an important opportunity to highlight the challenges unpaid carers face and recognise the contribution they make to families and communities throughout the Island. It also helps people who don't think of themselves as having caring responsibilities to identify as carers and access much-needed support.



Councillor Karl Love, Cabinet member for adult social care, said the role of the unpaid carer was crucial in enabling people to live well and remain independent. Many are close loved ones, partners, family and friends. "Often this can be exhausting as carers are so busy helping the person they are caring for that they neglect their own health and well-being. I have listened to the personal stories of those who provide care and heard their concerns. They are a hidden army of workers, caring out of love for one another. This is why Carers IW is so very Important, offering amazing support so no-one has to feel isolated or alone."

The role and challenges of the unpaid carer were highlighted to hospital staff during an open day at the Carers Lounge, based at St Mary's Hospital, Newport. The service offers personalised one-to-one emotional and practical support for carers. Elsewhere, the Carers Centre, located behind the Riverside Centre, threw open its doors for National Carers Week with carers, and those they care for, invited along for tea and cake, fun and chat. New members were also invited to join in the fun at the centre's weekly arts and craft group, which provides an opportunity for carers to learn new skills. If you are a carer and in need of support, please contact Carers IW on (01983) 533173 or visit www.carersiw.org.uk/

The final report of the Local Government Association's review of the Isle of Wight's planning system has been published.

The report praises the "significant passion" amongst councillors, staff and local people in relation to issues around housing, development and growth housing, development and growth. But it emphasises the need for planning to take place "within a framework of respect for others and their differing views and motivations". The report gives a range of recommended actions, including to urgently finalise and adopt the Island Planning Strategy, and to rebuild trust between councillors, staff and the community.

The review was carried out in May this year — at no cost to the authority — by a councillor and senior officers from Cornwall, Colchester, the Isles of Scilly and St Albans City and District councils, as well as the LGA. The review looked at the council's planning function as a whole including the work of staff in the planning department, and elected councillors making up the planning committee. Over three days the peer review team gathered information and views from more than 24 meetings, speaking to over 74 people including a range of council staff, elected councillors and representatives of other organisations.

Council leader, Councillor Lora Peacey Wilcox, said: "We invited the LGA to undertake this review because planning is such a crucial part of delivering the council's objectives. Working with the external LGA review team was a valuable experience for all of us, and the final report reflects the spirit of positive improvement that we took away from the three days the team spent with us. I am pleased to see that the team acknowledged the passion, positivity and sheer hard work that goes into our planning processes - from councillors, staff and others across the Island such as towns and parishes. I'm also glad that they underlined the importance and urgency of putting in place the Island Planning Strategy, and of improving customer focus, communications and trust throughout the planning system. Now the final document is here, we will work with stakeholders to promptly bring forward improvements based on the report."

The Office for National Statistics has this week released its first official results from the 2021 national census, including key information about the population of the Isle of Wight.

The first results from Census 2021 include estimates of households and the population for England and for Wales, available for each local authority district, by sex and 5-year age band. On the Island in 2021, the overall population (rounded to the nearest 100) was 140,400, a rise of 2,100 from the 138,300 usual residents as at census day 2011, ten years earlier. So the Isle of Wight population size has increased by 1.5%, which is considerably lower than the overall increase for England (6.6%), where the population grew by nearly 3.5 million to 56,489,800. The population density has also been released, and this too shows a small rise, from 360 people per square kilometre in 2011, to 370 in 2021. In 2021, the Isle of Wight ranked 161st for total population out of 309 local authority areas in England, which is a fall of 16 places in a decade.

There has also been a rise in older residents. The 2021 census reveals an increase of 24.7% in people aged 65 years and over (compared with an increase of 20.1% across England as a whole), a decrease of 5.3% in people aged 15 to 64 years, and a decrease of 6.3% in children aged under 15 years.

In 2011, there were 61,100 households with at least one resident on the Island, and by 2021 this had risen to 64,800 households with at least one resident (figures are rounded to the nearest 100).

Director of regeneration, Chris Ashman, said: "We use information like this from the ONS to plan how we will deliver services and to make vital decisions, including choices with very long-term effects such as housing supply, regeneration, public health and transport provision. We have reliable estimates for these figures but it's always a good idea to put these to the test now and again - which is why the ten-yearly census is so valuable."

Cllr Chris Jarman said: "The census is important for historical research and for our Island future planning on everything from our health sector needs, education provision and care in later years. As further demographic details are released by ONS we will continue to analyse the trends and to refine our local plans accordingly. The continued shift on our Isle of Wight to an increasingly older population and fewer school age children raises particular challenges and demonstrates the unique pressures on our community".

Islanders are set to be given a helping hand with the cost of living courtesy of money distributed by the Isle of Wight Council.

The local authority has been given government funding to assist those not eligible for an energy rebate under the existing main scheme, which requires councils to pay £150 to households in council-tax bands A to D. Now households in council tax bands E to H can apply for a discretionary payment of £150 to help with rising energy prices as part of a two-phase scheme.

Phase one-

This will be delivered between 4 July 2022 and 2 September 2022. The eligibility criteria for this phase are as follows:

- A) People liable for council tax in bands E to H properties, and in receipt of Local Council Tax Support. If you fall under category A, you are not required to complete an application form. The team will contact you separately about your payment. You may be sent a letter asking you to complete an application with an online code. If so, you need to use the energy bills rebate portal.
- B) People liable for council tax in bands E to H properties, and in receipt of housing benefit or universal credit.
- C) People not liable for council tax, but liable for rent, and in receipt of housing benefit or universal credit.
- D) People liable for council tax in bands A to D properties, and moved into their address after 1 April 2022.

If you fall in categories B to D, you need to apply: www.iow.gov.uk/Residents/Benefits-Council-Tax-and-Business-Rates/Council-Tax-Services/Council-Tax/Energy-rebate/

You will be required to upload evidence of your bank statement which shows your name, address, bank account and sort code details. You may also be required to upload proof of your rent if applying under category c. It is important that you upload evidence at the time of submitting your application, otherwise this could delay your application being processed and the payment being made.

Phase two - Details of this phase will be announced following the closure of phase one.

Further details of the scheme can be found at: www.iow.gov.uk/Residents/Benefits-Council-Tax-and-Business-Rates/Council-Tax-Services/Council-Tax/Energy-rebate/

Islanders most in need are being offered vouchers to help buy food during the cost of living crisis.

The scheme allows people to spend the one-off vouchers at one of the Island's major supermarkets, or in one of the new community pantries. A food voucher worth £125 is available to applicants in receipt of Local Council Tax Support, and Pension Credit Guarantee Credit. Those in receipt of Local Council Tax Support and benefits-related Free School Meals or Early Years Pupil Premium can apply for a £50 food voucher. Meanwhile, households in receipt of Local Council Tax Support with no children or pensioners can apply for a food voucher worth £25. Full details including how to apply for a voucher are available on the connect4communities website.

Application forms can be completed online with paper copies also available from many community outlets, including libraries and some schools. A full list is available on the web page.

Financed by the £1.1million Household Support Fund, the voucher scheme forms part of a package of new supportive measures to help households with children, the elderly and other residents who are struggling financially. Queries regarding the voucher scheme should be directed to 01983 823950 or c4cvouchers@iow.gov.uk

The Isle of Wight Council continues to work hard to make energy rebate payments to eligible residents as quickly as possible.

The government is providing a £150 rebate to council taxpayers in bands A-D (and E if in receipt of disabled persons reduction) to help with rising energy costs. This is a one-off payment and will not have to be repaid.

The council has made a total of 43,413 payments equating to more than £6.5 million. Of these, 34,772 have been to those that pay by direct debit - 93 per cent of direct debit account holders - and 8,641 to cash payers.

The letters sent out to people who pay by cash contain a unique code. This code enables the resident to complete a short application online so payment can be made. If you pay by cash, please allow a couple of weeks for it to arrive.

Islanders are being thanked for supporting the new household battery collection service.

The Isle of Wight Council, in partnership with its waste service provider Amey, launched the scheme on 2 May. Since then, an amazing 1.9 tonnes of spent household batteries have been collected from residents. That's the same weight as three-and-a-half polar bears!

Councillor Karen Lucioni, Cabinet member for waste, said: "Fires caused by items such as batteries can cause a lot of damage at waste treatment sites, as well as putting crews at risk and it is heartening to see how popular this scheme is already becoming."

If you haven't joined the residents already taking part — it couldn't be any easier:

- Place your spent household batteries safely and separately in their own clear sandwich sized bag.
- Leave the clear bag containing the batteries on top (not inside) of your general waste (black bins/black gull-proof sacks) on your general waste collection week.
- All the batteries collected by the crews are placed in a special box fitted to the collection vehicles and sent for sorting and processing.
- Metals and chemicals are removed and used to make new batteries and other products.

Batteries thrown into ordinary bins, household waste or with other recycling are dangerous. They can easily get squashed, compacted, punctured, shredded, or soaked in liquids. When this happens, they can ignite. This can lead to fires that endanger lives, cause expensive damage and disrupt waste services.

The Isle of Wight NHS Trust Ambulance Service is seeking feedback. If you or a loved one have recently called 999 for an ambulance or been conveyed by an ambulance, we would really like to

know about your experience.

Please visit Isle of Wight NHS Trust - Ambulance Service Feedback (iow.nhs.uk)

<https://www.iow.nhs.uk/our-services/acute-care-services/ambulance/Ambulance-Service-Feedback.htm>

Thank you.



Residents' views sought on enhanced access to GP practice services

Residents are being asked for their views on plans to offer enhanced access to local GP practice services from the autumn.

The move could see practices open early in the morning and in the evening during weekdays and during the day on Saturdays, to provide additional appointment opportunities outside of normal working hours.

The changes are part of a requirement from NHS England which aims to reduce variability across the country and increase patients' understanding of and access to available services.

The enhanced access is likely to involve a wide range of different healthcare professionals and could include non-urgent appointments as well as routine services such as screening and health checks and seasonal requirements including flu vaccinations.

To complete the survey:

- Use the following links:

A) Central & West Wight Health Alliance Primary Care Network (for the following GP practices: Newport Health Centre, Brookside Health Centre and Cowes Medical Practice) <https://mysay.is/EAIOWCandW>

B) North East Locality Primary Care Network (for the following GP practices: East Cowes Medical Centre, Medina Healthcare (Wootton), Esplanade Surgery, Tower House Surgery, Argyll House surgery and St Helen's surgery) <https://mysay.is/EAIOWNE>

C) South Locality (IW) Primary Care Network (for the following GP practices: The Bay Medical Practice, Ventnor Medical Practice and South Wight Medical Practice in Brighthstone, Godshill and Niton) <https://mysay.is/EASIOWSW>

- Contact your local surgery for a paper based copy.

It is up to local surgeries to promote and deliver the survey, so please do make sure your voice is heard!

Helen Lewis - Age Friendly Island Officer (Engagement)

Please note - the deadline for completing the survey is midnight on July 17th.



Tour of Britain

How to Step up a Gear for the Isle of Wight Stage!

The final stage of the Tour of Britain comes to the Isle of Wight in two months - on September 11 - for what is set to be one of the most iconic stages in the history of the cycle race!

The Visit Isle of Wight Tour of Britain team have now created a variety of information packs for businesses and communities.

Head to <https://visitwightpro.com> to discover a number of ways to boost your trade before, during and after the Tour of Britain final stage including a get involved pack, cyclist friendly pack and event FAQs.

Check out the interactive race map for a reminder of where the race passes through <https://www.tourofbritain.co.uk/stages/stage-eight/> or contact Sarah and Jo at tourofbritain@visitwight.org for more information.

Sarah and Jo

... and a further Tour of Britain Update...

As the planning for the Isle of Wight leg of the Tour of Britain on 11th September continues to gear up, the Isle of Wight Council has established two new channels of communication to help provide residents, businesses, and other stakeholders with more information about this prestigious and exciting event.

New pages have been created on the council's website www.iow.gov.uk/tourofbritain which provide links to race information and the route, including a street-by-street guide along with an initial indication of race times as it passes through key towns. These times will be refined when the organisers announce their race schedule during August and updated on the website.

The website pages also have some answers to some of the key questions people may have eg around parking and access, and where to watch the race and more detail will be added to these as information is confirmed.

A Facebook page has also been created <https://www.facebook.com/TourofBritainIOW> and this will also be sharing key information and updates about the event.

Both resources are being promoted to a wide range of key stakeholders and distributed via the local media.

We will continue to work with Visit Isle of Wight to ensure further information is shared with town and parish councils, residents and businesses through a series of drop in events, posters and other materials over the course of the summer as more details are confirmed. *Gavin Foster*



IW Chamber of Commerce

Events, engagement, and the return of Expo: why networking is at the core of IW Chamber.

Our upcoming Expo is the one time of the year where a very wide range of Island businesses come together to showcase what they do and what they offer. As a business or a customer, you can meet the leaders of these businesses, discuss with them your needs and how they can provide solutions, face to face. You can cut out the Google search and all back and forth that usually follows. Instead, you walk around, chat and build a relationship. It's a much stronger and more powerful way to start any interaction, both as a seller and the purchaser.

Business is about relationships. People do business with people, but even more importantly, they do business with people the like. This is where Expo comes into its own. Some people come to Expo with a clear need and they're looking for a business to meet it. Others come and discover an opportunity and service they didn't even know existed.

Whether you are buying or selling, Expo is the place to come to chat and learn and interact. After the event we hear so much about all the connections made and contracts signed and networks formed.

It's free to attend, at the Lakeside Park Hotel in Wootton on Wednesday September 14th. We look forward to seeing you there. Find out more via <https://www.iwchamber.co.uk/event-directory/expo/>

Emma Spinelli



Make Expo 2022 part of your business calendar – save the date!

IW CHAMBER BUSINESS EXPO 2022

Join hundreds of Island business people for a packed day of networking opportunities

Supported by **wightfibre** *because we care*

WEDNESDAY 14th SEPTEMBER

AT LAKESIDE PARK HOTEL
10.00am – 4.00pm

The Island's biggest business-to-business networking event

Meet the exhibitors, network with potential customers and engage with the Island's business community

FREE ENTRY to everyone
Join us!

www.iwchamber.co.uk/expo2022

News from Aspire Ryde

Some information about a few things that Aspire are doing:

- We have a weekly coffee morning from 10.30am to midday every Tuesday with CAB; social prescribers and others are present to talk to people.
- We are running our 'food and fun' sessions again across the summer for those entitled to free school meals and other income support.
- We are beginning a special session in the soft play for those with additional needs, which features limited numbers, lower levels of sound and lighting etc..
- The Living Well team are also launching a CAMEO (come and meet each other) session once a month in Calbourne with a view to starting others in the surrounding villages. This will be on the first Tuesday of every month from 10.30am.
- We are also supporting a Dementia Lunch Club in St Helens on the first and third Wednesday of each month - in St Helen's Community Centre *(Posters below)*

Trevor Nicholas (Chief Executive Officer)





Aspire Coffee Morning

Tuesday's at 10:30 AM - 12:00 PM

ASPIRE
RYDE
Transforming place Transforming People



Kingdom Play

Aspire Altogether

Closed soft play sessions for children with additional needs

Starting: 5th July

Tuesdays from 3:30 - 5:30

Booking is necessary, please contact:
karens@aspireryde.org.uk

TOGETHER



Kingdom Play

Summer Food and Fun!

We have 70 free places available per day for play sessions, activities and lunch within our kingdom play centre - from the 26th July to the 26th August. Every Tuesday to Friday. Contact us between 10 and 4 on 01983 716020 or foodandfun@aspireryde.org.uk

SESSIONS START AT 10:00 AND FINISH AT 2:00. LUNCH WILL BE AT 12:30

If you are on income related benefits all you need to do is contact Aspire Ryde and complete a booking form. We are able to offer 70 places per session for children aged 5 to 12. Which will be allocated in order of registration.

FUN GAMES, ARTS AND CRAFTS, HEALTHY SNACKS, FRIENDLY STAFF, SPECIAL GUESTS!

We look forward to seeing you!

This will take place in kingdom play at Aspire Ryde, Dover Street, PO33 2BN



Dementia Lunch Club

Every 1st & 3rd Wednesday
11.30am - 2.30pm
St Helens Community Centre
Upper Green Road, St Helens
£5 per person

To book please call Ruth on 07773440657 by 8.30pm on Sunday prior to the club

Sponsored by:

LW & HS St Helens Medical Centre

SOVEREIGN

Community Action Isle of Wight

NEW FREE online training courses for people who live and/or work or volunteer on the Isle of Wight are offered by the Community Resilience Project of Community Action IW in September and October 2022 thanks to grant funding from the Coronavirus Community Support Fund (CCSF), distributed by The National Lottery Community Fund (TNLCF).

How to Improve Your Funding Application Success Rate - 7 September 2022 (10:00-13:00)

Most charities and voluntary groups apply for funding as part of their efforts to raise money for the work they do in their communities. Many of the important public services are now run by charitable and not-for-profit organisations. Ensuring the viability and financial sustainability of these services is crucial for the wellbeing of our communities.

This online training session is designed to help representatives of charitable and not-for-profit organisations to gain the knowledge and skills needed for successful funding applications - in the shortest possible time. To book your place on this FREE training course, please email: zodonnell@actioniw.org.uk

Hybrid Working for Managers - 14 September 2022 (10:00-13:00)

This online training session is designed to equip managers and team leaders with key knowledge, insights and tips to help them manage and support employees and build team understanding in new ways. It will help them create practices that ensure employees in the office are in sync with those working from home, and also build fairness and flexibility into the workflow. To book your place on this FREE training course, please email: zodonnell@actioniw.org.uk

Introduction to Storytelling - 22 September 2022 (10:00-13:00).

Humans have been telling stories for millennia and storytelling is one of the most effective forms of communication we have at our disposal. While data-driven information tends to speak to people's intellect, stories stir their imagination and reach their feelings. That's what makes stories such a powerful tool to engage and motivate. The ability to tell a good story is a powerful addition to anyone's ability to communicate meaningful messages to clients/service users, colleagues and the public. Wouldn't it be amazing to have this kind of skill and confidence to use it in your personal and professional life? Guess what? You can develop it. The Introduction to Storytelling online training is designed to equip you with the knowledge, skills and confidence to use the power of storytelling in your organisation and beyond. It will take you step-by-step through activities that will have you telling stories as never before. To book your place on this FREE training course, please email: zodonnell@actioniw.org.uk

Time management skills - 29 September 2022 (10:00-13:00).

With ever-increasing workloads and deadlines, the ability to manage our time has never been more important. Time is a fixed resource and, no matter what we do, we can't change that.

This online training session is for busy people who want to be able to manage their time better. Anyone at any level of their organisation will benefit from the strategies and techniques discussed throughout this intensive 3-hour training which is specially designed to provide delegates with the most effective skills and techniques in the shortest possible time. To book your place on this FREE training course, please email: zodonnell@actioniw.org.uk

People management skills - 4 October 2022 (10:00-13:00).

In this online training session, you will learn best practices and behaviours to help you build key components that make up an effective and successful manager able to get the best from people. It offers an interactive and experiential approach to learning which is suitable for both, new team leaders and managers, and for those with experience who would like to enhance their people management skills. To book your place on this FREE training course, please email: zodonnell@actioniw.org.uk

Project Management Skills training course comprises 4 x 3-hr sessions:

- Session 1 - 11 October 2022 (10:00-13:00)
- Session 2 - 13 October 2022 (10:00-13:00)
- Session 3 - 17 October 2022 (10:00-13:00)
- Session 4 - 21 October 2022 (10:00-13:00)

FREE Training Offer
from the Community Resilience Project
of Community Action Isle of Wight!



 HM Government

In partnership with
THE NATIONAL LOTTERY
COMMUNITY FUND

Projects are, more than ever, a fact of life for all organisations in the public, private and voluntary sectors. Some people do projects well, whilst others go from one disaster to the next, never seeming to learn the lessons of the past. By applying project management principles and tools, you can avoid the common problems associated with projects and become an effective and successful project manager.

The Project Management Skills online training (4 x 3hr sessions) is designed to introduce you to key elements of project management and to equip you with useful skills, practical tips and tools to ensure the success of your projects. All four sessions must be attended to receive a certificate. To book your place on this FREE training course, please email: zodonnell@actioniw.org.uk

Zoryna O'Donnell (Volunteer Training Coordinator)

Citizens Advice IW

CA IW was pleased to be able to support Ventnor Day on Saturday 2nd July. Tony had organised glorious weather again and we were inundated with people visiting from the town, across the Island and on holiday.

Many people had heard of Citizens Advice but didn't know we are a charity, so it was nice to get that message out into the community. Some problem-solving activities and a small raffle ensured passers-by stopped to chat.

It was nice to hear from those that had used our service who were very complimentary on how complex issues had been sorted out, this is great news to take back to the volunteers and staff. I did talk to a lady who had ben left alone to deal with a bereavement and hadn't realised we could help, so we know there is always work to be done to market what the charity can do.

At the Volunteer Fair at Northwood House, which had a slower pace, we were encouraged with positive enquiries into what volunteering with us looks like and how our new stepped approach to training, from Advice First Aid to Adviser, is more appealing.

Our campaign to sponsor a volunteer has gained some traction and from the recent article in IWALC's newsletter we received a personal donation of £900. Thank you very much.

Have a great summer and I look forward to providing another update in September

Paul Savill



Digital Support Workshops



Learn new skills, gain confidence and meet new friends at our digital support workshops. Sessions are gently paced and led by our dedicated Digital Facilitation Officer.

Booking essential. Spaces strictly limited.

Call (01983) 525282 or email digital@ageukiw.org.uk

July Workshops - All About Apps

Learn how to search for, install and use helpful Apps on your smartphone or tablet.

Date	Time	Venue
Mon 4th July	11.00-12.00	Zoom
Weds 6th July	10.00-12.00	Wight Mouse, Chale
Thurs 14th July	10.00-12.00	Newport Library
Mon 18th July	10.00-12.00	Cowes Library
Weds 20th July	10.30-12.30	Ryde Library
Tues 26th July	10.00-12.00	Sandown Library
Weds 27th July	10.00-12.00	Bembridge Library

Monthly Report from MP Bob Seely

Boris Johnson

I believe Boris has made the right decision to step aside. Despite his past strengths, he is becoming a distraction to governing Britain. I am concerned that important debates and important issues - on the Island and nationally - are being drowned out by the incessant noise from Downing Street.

I thank Boris for his service, he's had some big wins - and I'm sorry it has ended this way - but I believe his resignation today is the right decision for the Conservative Party, and the right decision for our country.

I believe Boris should go now and make way for others to come forward. We need to move swiftly on. We need a new leader who has the trust and respect of his or her colleagues - and a renewed sense of purpose - to govern us through a pivotal stage in our country's history and meet the nation's challenges.

We need to regroup, rebuild and get on with delivering for the people we represent.

I will continue to deliver for the Island as I have done for the past five years. We've seen over £100 million of funding secured during that time which includes upgrades to our hospital, our railway and our college and we've seen the future of shipbuilding in East Cowes secured through our successful levelling up bid.

In addition, we are now part of an Islands Forum that will give UK islands a collective voice in Westminster. The government has accepted in principle our case for additional funding for the Isle of Wight Council and we have already seen some funds committed. I will be talking to the council about the next steps for securing an uplift through the Fair Funding Review.

I look forward to working with a revitalised ministerial team who can help me to continue to deliver improvements for the Island.

Bottom Trawling

I'm supporting an important campaign to ban a highly destructive form of fishing - bottom trawling - which destroys the fragile marine ecosystems we want to protect.

A ban on this damaging fishing practice would also be good for small fishing communities.

While I'm pleased the government has committed to partially ban bottom trawling in some Marine Protected Areas, I want it to go much further.

Islands Forum

I was pleased to recently receive a copy of the Terms of Reference for the new 'Islands Forum'.

The Islands Forum is an idea adopted by the government following concerns I raised about the challenges that island communities face.

The purpose of the forum is to identify solutions to shared challenges and opportunities facing island communities across the UK.

It will also provide us with an opportunity to ensure that island needs are considered in government policy development.

In lots of ways, we're already getting a better deal for the Island, but this is another route by which we can make sure we are delivering better opportunities and a better future.

Future Plans for Cowes

I welcome new investment plans by Cowes Harbour Commission that will lead to more jobs in Cowes in an expanding and greener maritime sector.

The plans include the potential for adding a new cruise ship mooring, developing yacht repair facilities at Kingston Wharf, investigating the viability of installing electric charging facilities for vessels and using greener fuels.



Cowes Harbour Commission is being ambitious with its vision for Cowes and I'm very happy to support them in any way I can.

Over the last few years, I have worked hard, with others, to secure a brighter future for Cowes and East Cowes. The plan has always been to encourage regeneration and create jobs to improve prosperity and a deliver better future for Islanders – Cowes Harbour Commission's strategy is in lockstep with that thinking.

In East Cowes, working with the then council, we fought hard to purchase the Columbine building in order to secure the future of shipbuilding at the site."

Great strides have been made recently in boosting the maritime industry in Cowes and East Cowes. These include persuading ministers to release £6 million of levelling up money to fund a new, heavy lift crane, improve the iconic Columbine building for shipbuilding, renovate the neighbouring Victorian barracks and create a new public square along East Cowes Esplanade.

Government investment and an increasing number of jobs means the future is looking bright on both sides of the river. Creating jobs and opportunities for Islanders is what I am focused on.

Tesco

Last Summer I welcomed an assurance that local produce would remain on sale at the new Tesco store in Freshwater following its takeover from the Co-op. I am still keen to see Tesco deliver on that promise, and I have written to them to that effect.

I want to see all supermarkets on the Island doing more to support Isle of Wight farmers and food producers. Using local suppliers supports the Island's economy, reduces food miles and reduces the need for preservatives.

There's plenty of high-quality local produce on the Island to choose from and I know Islanders are keen to support Island farmers and buy local where they can. It would be great to see more lines available for purchase on supermarket shelves as well as in our local farm shops.

Bob Seely, MP



**DUE TO THE GENEROSITY OF THE PUBLIC
WE HAVE PLENTY OF:**

PASTA
TINNED FISH
TINNED MEAT
TINNED VEG
COOKING SAUCES
TINNED TOMATOES
BAKED BEANS
TEA
CEREAL

Thank you
Isle of Wight
foodbank

powered by  skillslabs

business centre

THE ISLE OF WIGHT COLLEGE



"The Solent region has good levels of entrepreneurship and small business start-up, but a disproportionately high level of small business failure. We aim to address this."

On Thursday 30th June, employers were invited to join us to celebrate the opening of our new business centre here at the Isle of Wight College, where we welcomed James Luter, Head of Operations at Vestas to cut the ribbon.

The key aim of our new Business Centre is to improve economic activity, particularly for small to medium enterprises (SMEs) and micro-businesses across the Island.

With access to business skills specialists, the new Business Centre will support SME growth, developing the region's expanding technology sectors and creating a step-change in the capacity to improve clean growth and carbon reduction, digital futures, and marine technology.

The Isle of Wight 'skillslabs' Business Centre is part of the skillslabs project in partnership with five other colleges and professional partners in the Solent region, funded by the Department for Education.

It is now ready to be used and will act as a 'hub' providing employers with better access to the training they require, when and how they need it. For Business Centre or employer enquiries, contact: info@iwcollege.ac.uk

We would like to say a huge thank you to everyone that helped with the Annual Awards day held on Friday 8th July as well as those extra special learners who were nominated by their peers and tutors to receive recognition. It was a beautifully sunny day at Cowes Yacht Haven, with the stunning backdrop of Cowes harbour.



The college community, staff and learners gathered in a morning and afternoon ceremony to celebrate the achievements of the classes of 2022.

Throughout both ceremonies awards were presented by Mrs Kay Marriott JP (High Sheriff of the Isle of Wight), Dr Nick England DL (Chair of Corporation), Mrs Debbie Lavin CBE (College Principal) and a number of other VIP guests.

2022 Annual Student Awards Winners

Electrical Level 2

Electrical Level 3

Isle of Wight Chamber of Commerce - Business Student of the Year

NCFE Student of the Year Award

The Stuart Dyer Cup for Excellence

Equality & Diversity Student of the Year (University of Southampton Award)

Jeremy Davies Award for support to other learners

John Ackroyd Award for Young Engineer of the Year

Engineering Consultative Committee Cup

Apprentice of the Year Award

Student of the Year Award

Ben Langford

Glen Smith

Lauren Rayner

Jess Bird

Oakley McDonald

All Hassan All

Kirsty Large

Bobby Minns

James Nilsen-Grahame

Hayden Rooney

Alicia Lloyd



Island Roads



Work to replace new yet traditional barriers at The Causeway in Freshwater has been completed.

The project began earlier this month following lengthy discussions with the IW Council over the most suitable way of providing safe barriers that were also in keeping with the unique rural surroundings. The work also required other consents given the location's environmental importance – it is a Site of Special Scientific Interest, a Special Area Conservation, a Special Protection Area and Area of Outstanding Natural Beauty, and also a designated RAMSAR site because it is a renowned waterfowl habitat. The work itself has installed a new but traditional-looking post and rail system using English oak posts supplied by local company Chessell Woodyard of Calbourne. The project has already received the thumbs-up from the local community.



Cllr John Medland, Isle of Wight Council member for Freshwater South said: "I am delighted to see these works finally completed after four years of temporary barriers in what is an iconic local beauty spot. These repairs are just what the local community has been asking for."

Cllr Phil Jordan, IW Council cabinet member for transport and infrastructure said: "The work looks really good, and while it has taken longer than envisaged and we have had to work through holdups in the planning and agreement stages, the project has now restored the unique character of this lovely spot so it can be enjoyed and accessed safely by residents and visitors alike. A great success story for all concerned."

Island Roads construction manager Keith Gourlay said: "I understand and share the local frustrations regarding the timescales getting through the agreement stages, but we're pleased that the work is already getting good feedback, and we are also happy to have worked so well with a local company, Chessell Woodyard, who were extremely helpful."



Photos: Cllrs Jordan and Medland, with Island Roads project manager Stuart Faulds

Ryde safety scheme to strengthen Queens Road wall

Island Roads is to begin major work to repair and strengthen a section of wall in Queen's Road, Ryde, next month. The work along a 40-metre section of the retaining wall will mean Queen's Road will need to be made one-way (heading into the town) for up to ten weeks. Traffic leaving Ryde will have to do so via Argyll Street for the duration of the project. Urgent work is needed following the collapse of a section of wall that retains the highway. Without repair and strengthening there is a danger the footway and eventually the carriageway would be undermined.



“Given the condition of the wall, which will only get worse, it is important to undertake the repairs and strengthening as soon as possible,” said Island Roads Senior Project Manager Jason Boulter. “The work will involve us rebuilding and strengthening the wall below highway level and then rebuilding the visible parapet wall above street level using traditional stone so it maintains the local character. Unfortunately, the scale and complexity of work is such that we will need to close one lane of Queen’s Road – hence the need to make it one-way. We understand this will cause some inconvenience to local people but we do need to undertake his work to ensure Queen’s Road continues to be safe for all users. We would like to thank residents in advance for their understanding and co-operation.”

Residents will be able to access their homes with pedestrian access maintained at all times. The section of wall to be strengthened is in Queen’s Road between its junctions with Binstead Road and Westwood Road. Work is currently scheduled to start on July 25 and affected residents will receive letters explaining more about the scheme.

Cllr Phil Jordan, IW Council cabinet member for highways and infrastructure, said: “I am acutely aware of the disruption caused by roadworks but I am confident that Island Roads will manage traffic flows as best as they can within the vicinity of the works. This is a case of urgent works needed to protect the safety of highways users, both road and footways. The site has been made safe for some time while a permanent solution has been designed and agreed but now that work has been done, it is very much time to act as we cannot allow this site to deteriorate any further.”

“Please bear with us whilst the necessary works are undertaken and completed.”

The final element of highway work to improve safety at Smallbrook Roundabout near Ryde has been completed.

Over five nights, high-friction, anti-skid surfacing material was applied to all approaches to the roundabout which had previously been identified by road accident data as a junction requiring improvement. The work will mark the completion of the project by Island Roads for the Isle of Wight Council to introduce several safety features to Smallbrook which had previously been identified by accident data as a priority area for action.

Among the new features are the realignment of the junction’s approaches and introduction of new traffic Islands which will require traffic to slow down and negotiate the new roundabout rather than ‘straight-running’ across it. Visibility on the roundabout approaches has also been improved, especially for traffic approaching from Smallbrook Lane and Carters Road while there is also additional street lighting and a new reduced speed limit.



Samantha O'Rourke (Councillor Enquiry, Communication & Development Officer)

Red Funnel

Red Funnel gets in on the festival mood

Red Funnel geared up to transport thousands of festival goers to the Isle of Wight in June, with the team working hard to ensure that the festival experience started from the moment travellers arrived at the terminal. To support the increased demand over the festival period, Red Funnel added 12 additional sailings to their timetable, with office-based team members redeployed in and around the terminals to help ensure customers had a great customer experience throughout the weekend.



Festival goers were welcomed with music and festival-themed décor at Red Funnel's mini festival village complete with music at both the Southampton and Isle of Wight terminals.

Red Funnel also partnered with 14 schools on the Isle of Wight and mainland to create a wonderful range of artwork and sculptures in the theme of the festival. The students used a range of recycled plastics to create their masterpieces, which were proudly on display at terminals for festival goers to admire.

Showcasing the Isle of Wight

Red Funnel has been showcasing the Isle of Wight as a great place for a staycation, after booking statistics show that the amount of people taking motorhomes on a Red Funnel ferry have increased by over 970% since last year. As the travel disruption continues, more people trust that the UK will be open and easily accessible, attracting many people to visit the spectacular coastline. Island businesses including various eateries, pubs, bars and boutiques – as well as many outdoor activities – will be receiving a real boost this summer!

Josey Page (Account Executive)



News from Wightlink



School summer holidays are almost here

We are gearing up for a busy summer, making sure all our vessels are ready to bring over holidaymakers and take Islanders across the Solent for mainland adventures. We look forward to welcoming you on board if you're travelling over the next few weeks and hope you have a wonderful time.

Not surprisingly, we were rushed off our feet during the Isle of Wight Festival, back in its usual June slot for the first time since the pandemic. Unfortunately, two medical emergencies onboard early sailings on days when we were fully booked inevitably led to delays on our Fishbourne-Portsmouth route and we apologise if you were affected by this disruption.

Construction project updates

Major construction work is almost over at Portsmouth Harbour as we rebuild our entire FastCat terminal. We are sorry this has taken longer than expected as far more work was needed but the normal boarding ramp should be back in use before the end of the month.

More positively, contractors are now based on Ryde Pier and have started to transform the old tramway into a pedestrian walkway as part of the Council's Transport Interchange project.

Catching up with our sponsored groups

We welcomed more than a hundred sportsmen and women, talented athletes and representatives from arts groups, charities and good causes to a tea party at Quay Arts earlier in the month. They all receive support with cross-Solent travel through our community initiatives. Everyone enjoyed exchanging their news about recent achievements and future plans.



A highlight was the mass arrival of twenty members of the Wightlink White Mountain Cycle Race Team who quickly parked their bikes and made a beeline for the cakes. Have a look at our Wightlink in the Community page on Facebook for more information, photos and videos.

Pioneering project to tackle the cost-of-living crisis

We have teamed up with Dover Park Primary in Ryde to provide a new facility to help parents through the cost-of-living crisis. Using a £1,000 grant from our Green Fund for Schools, teachers have set up a

Donate and Take exchange. The idea is that parents can drop off unwanted or outgrown items of clothing such as school uniform and sports gear, which, after washing, can then be discreetly collected by families who may be able to make use of it. It's thought the Donate and Take station is one of the first of its kind on the Island.

Up to now, we have distributed around £15,000 to environmentally friendly primary school projects across the Island through this initiative.

Swimming the Solent for charity

Our Chief Executive is embarking on a gruelling challenge this summer – swimming more than five kilometres across the Solent from Gosport to Ryde for charity. Keith Greenfield and his daughter Jo Hudson will be taking part in Swim the Solent next month, helping raise money for people living with motor neurone disease (MND) and research into the condition.

He started open water swimming when Covid closed the public pools and is an enthusiast about quickly discovered the health benefits of swimming in the sea, rivers and lakes. If you would like to donate to the cause, here's the link:

www.justgiving.com/fundraising/keithandjo-swim

Karen Woods (Communication & PR)



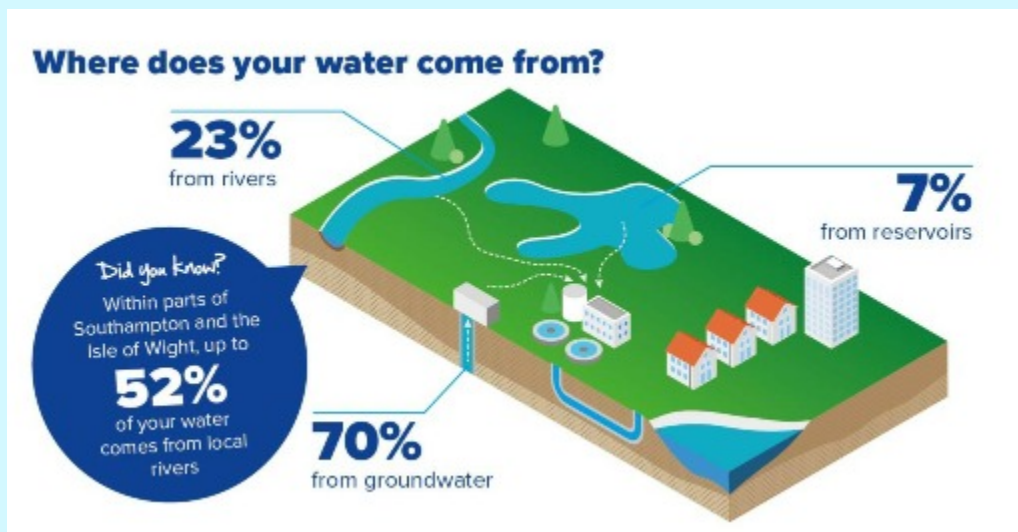
Southern Water

More people, less water

The South East is officially water-stressed. The local population is growing and climate change is bringing hotter summers and more extreme weather, which means our water sources are being topped up less often. As a result, we have more people and less water.



The majority of our region's supply comes from groundwater (70%). The rest comes from rivers (23%) and surface water reservoirs (7%).



Within parts of Southampton and the Isle of Wight however, up to 52% of people's water comes from local rivers, such as the Test and Itchen, with the water levels typically running much lower across the summer due to increased water use.

The more we take from local rivers, the more pressure we place on these precious habitats, including plants and wildlife.

Thank you, as always, to everybody who contributes to the Bulletin.

We hope you've enjoyed this issue...we're taking a break in August so will wish you all a great summer!