

The IWALC Bulletin

September 2021

Your questions answered, your experiences shared... news and information from across the Island...links and updates...

Your IWALC Matters!!

MESSAGE FROM THE CHAIR

Welcome to the September issue of the *IWALC Bulletin*! Since there was no issue in August, there is plenty of news in this issue, including a report on the IWALC AGM, which was held on 29 July.

I am pleased and honoured to report that at the AGM I was re-elected Chair. I would like to thank members for this indication of their support and I look forward to serving IWALC for another year. Mick Lyons and Sue Hardy were also re-elected as Vice-Chair and Treasurer respectively. However, it was encouraging to see a number of new faces at the AGM, some of whom were elected to represent IWALC on the various external bodies of which IWALC is a member.

One of my aims this year is to strengthen IWALC's role as a forum for sharing information and experience between councils. There are many ways in which we can do this, one of which is the *Bulletin*. I would like to see the *Bulletin* become a place where members can exchange information and opinions and provoke debate.

We have made a start in this issue. You will find two articles by members, expressing their opinion and making suggestions on particular issues. Please let us know what you think of these contributions. We have also invited those councils that have taken over redundant phone boxes to tell us what they have been doing with them. You will find responses from five of these councils in this issue.

We would also like to get your views on the *Bulletin* itself. Do you find it useful? Which parts do you find of most value or interest? Is it too long or too short? Should we continue to produce it monthly or reduce it to every other month - or even quarterly? These questions were discussed at a recent meeting of the Communications Group and views were divided. So please let us know what you think.

We would also welcome comments on any of the articles in this issue – or about any other subject relevant to local councils on the Island. It's your *Bulletin*, so please use it to express your views and concerns.

Cllr Diana Conyers (Fishbourne Parish Council)



Contact - IWALC County Officer, Heather Rowell (heatheriwalc@gmail.com)

Website - www.iwalc.org - Check out our Facebook page too.

The Bulletin - Jill Webster - jwebster.iwalc@outlook.com - 01983 721483

The deadline for the October issue is September 30th - thank you!

DISCLAIMER.

The function of the Bulletin is to inform members of issues and happenings that are of concern. All articles are taken in good faith and the opinions expressed in the Bulletin are those of the submitter. Submitted articles do not necessarily reflect our views. We cannot take responsibility for any legal queries resulting from these.

We reserve the right not to print submitted articles.

IWALC News...

IWALC AGM

We held our 2021 AGM on 29 July via Zoom. The meeting was well attended, with representatives from almost all the 26 member councils – including Sandown Town Council, which has recently rejoined IWALC.

The guest speaker was the Leader of the Isle of Wight Council, Lora Peacey-Wilcox. Lora praised the work of local councils and assured members that her new administration would be working closely with them. She reported that the Council had already agreed to restore IWALC's position as a voting member of the Corporate Scrutiny Committee and to give it a non-voting seat on the Planning Committee. She also promised regular meetings with Cabinet members. Two other members of the Cabinet, Paul Fuller and Jonathan Bacon, also attended in their capacity as parish councillors.

At the meeting, members elected officers for the coming year and representatives to the 15 external bodies on which IWALC is represented. Councillors Diana Conyers, Mick Lyons and Sue Hardy were re-elected as Chair, Vice-Chair and Treasurer respectively. See next pages for a list of those appointed as our representatives to external bodies – and also for a list of councils' IWALC representatives for 2021/22.

Consultation on Draft Island Planning Strategy

Initial impressions suggest that the Isle of Wight Council is living up to its promise to involve local councils. The Council has recently launched a consultation on the second draft of its Island Planning Strategy and Councillor Paul Fuller, the Cabinet member responsible for Planning and Housing, has ensured that we are fully consulted. Planning staff provided an online briefing for all local councillors in July and attended our August Topic Meeting, which focused on the draft Strategy. The meeting was well attended and there was a constructive discussion, particularly on issues related to housing. It was agreed that IWALC will make its own submission to the consultation, highlighting local councils' main concerns.

We would urge all local councils to look at the document and submit your comments. The Planning staff are now holding meetings with individual local councils to discuss issues specific to their areas. If your council has not yet arranged such a meeting and would like to do so, you can email James Brewer, the Policy Team Leader, at james.brewer@iow.gov.uk. Please send IWALC a copy of any comments you submit, in order to help us prepare our own submission.

Topic Meeting on Island Roads?

Councillor Phil Jordan, Cabinet member for Highways, Transport and Infrastructure, has offered to come to our next topic meeting, on 28 October, to brief us on the implications of the changes in the Island Roads PFI for local councils. This is subject to ratification by members at the September Executive meeting.

Community Resilience Workshop 25 September

Our next major event is the Community Resilience Workshop on Saturday 25 September. The purpose of the Workshop is to use the lessons learned from partnership working during the Covid-19 pandemic to improve local service provision on a long-term basis. It will focus on the role of parish, town and community councils in coordinating efforts at the community level and action needed at the county level to ensure they have the support they need to do this. We hope that it will help to promote the role of local councils and strengthen their bargaining power in future negotiations with the Isle of Wight Council and other organisations.

The Workshop is being planned in consultation with the Isle of Wight Council and Community Action Isle of Wight and has the support of the National Association of Local Councils (NALC). NALC's Chair, Sue Baxter, will be attending. Financial support has been received from CCLA Investment Management, a national organisation that provides financial advice and support to local councils, and from Hovertravel, a local organisation that played a major role in the Covid pandemic.

The Workshop will be held at Sandown Town Council's Broadway Centre from 10.00 am to 3.00 pm. Refreshments will be provided by Aspire Ryde. Attendance is by invitation only. Invitations have been sent to all parish, town and community councils and to a number of relevant Island-wide organisations. If you have received an invitation and haven't yet responded, please contact Jill Webster as soon as possible.

Training

Our next training event will be an Introduction to Planning course. This will be provided twice: a face-to-face session on Wednesday 22 September (6.00-8.30 pm) in County Hall and an online session on Wednesday 29 September (6.30-9.00 pm). The course will be run by Chris Turvey, Ryde Town Council's Planning Clerk. Places are still available - if you wish to attend, please contact your clerk.

There will also be an Introduction to Finance course on Wednesday 27 October and a Code of Conduct course on Wednesday 24 November. The Finance course will be run by Sue Chilton, East Cowes Town Clerk, and the Code of Conduct one by Chris Potter, the Isle of Wight Council's Monitoring Officer. Further details will be sent to clerks shortly.

Isle of Wight featured in national journal

An article by Gill Kennett and Diana Conyers, entitled 'The Isle of Wight Response to the Covid-19 Outbreak: Building Community Resilience', was published in the August issue of NALC's Local Council Review.

IWALC Representatives & Deputies 2021/22

The role of the representative is to attend IWALC meetings, report back on these meetings to their council, bring to IWALC's attention any issues raised by their council that may be relevant to other councils and/or on which they need IWALC support, and submit items of interest related to their council for the IWALC Bulletin.

Arreton Parish Council: Heather Calloway; Martin Kimber

Brading Town Council: John Graney

Brighstone Parish Council: John Cirrone, Nick Stuart

Chillerton and Gatcombe Parish Council: Peter Whiteman; John Hobart

Cowes Town Council: Paul Bertie; John Nicholson

East Cowes Town Council: Cameron Palin; Michael Paler

Fishbourne Parish Council: Diana Conyers; Weronika Nowak

Freshwater Parish Council: John Medland; George Cameron

Godshill Parish Council: Alison Child

Gurnard Parish Council: Paul Fuller; Nicki Wood

Havenstreet and Ashley Parish Council: Bob Blezzard; Mick Lyons

Lake Parish Council: David Hardy; Sue Hardy

Newchurch Parish Council: June Davison

Newport and Carisbrooke Community Council: Shirley Smart; Terry Martin

Nettlestone and Seaview Parish Council: David Adams; Patricia Redpath

Niton and Whitwell Parish Council: Wendy Loader; Jayne Hill

Northwood Parish Council: John Pullen; Mark Coventry

Rookley Parish Council: Ian Rigaud-Barrett; Alex Watts

Ryde Town Council: Jenna Sabine

St Helens Parish Council: Jonathan Bacon; Sarah Elliott

Sandown Town Council: Heather Humby; Toby Wilcock

Shalfleet Parish Council: Helena Hewston; Shirley Stables

Shorwell Parish Council: John Harrison

Wootton Parish Council: members rotate

Wroxall Parish Council: Cheryl Watts; Kai Wacker

Yarmouth Town Council: Steve Cowley

IWALC Representatives to External Organisations 2021/22

The role of the IWALC representative is to attend meetings of the organisation, report back on these meetings to the IWALC Executive Committee and bring any relevant matters raised by IWALC members to the organisation's attention.

National Association of Local Councils (NALC): Bob Blezzard; Dave Hardy
Southeast Regional County Association (SERCAF): Dave Hardy; Bob Blezzard
Hampshire and Isle of Wight Local Government Association: Bob Blezzard; Shirley Smart
Isle of Wight Council Health and Wellbeing Board: Kai Wacker; Shirley Smart.
Isle of Wight Council Corporate Scrutiny Committee: Cameron Palin; Helena Hewston
Isle of Wight Council Appeals Committee: Mick Lyons; Martin Kimber
Isle of Wight Council Planning Committee (interim): Shirley Smart
Local Access Forum (LAF): John Graney
Voluntary Sector Forum: George Cameron; Kai Wacker
Carisbrooke Castle Museum: Helena Hewston
Campaign for Protection of Rural England (CPRE): Steve Cowley
AONB: John Graney
Community Led Housing Board: Peter Whiteman; Helena Hewston
Prevent Board: John Graney
Age Friendly Island: George Cameron

IWALC Meetings - 2021/22

30 September 2021: Executive meeting
28 October 2021: Topic meeting
25 November 2021: Executive meeting
No meeting in December
27 January 2022: Executive meeting
24 February 2022: Topic meeting
31 March 2022: Executive meeting
28 April 2022: Topic meeting
26 May 2022: Executive meeting
30 June 2022: Topic meeting
28 July 2022: AGM

All meetings will be held at 7 pm.

The mode/venue of a meeting will be determined nearer the time....BUT.. what is your opinion on how future meetings should be held? Face-to-face or Zoom? Or even hybrid...if we can get the technology sorted out! Please let us know (jwebster.iwalc@outlook.com) which you prefer...and why?

Zoom Meetings with MP Bob Seely

Following a break during the summer months, the fortnightly Zoom meetings with MP Bob Seely have now resumed. Subjects raised and discussed at the first meeting (Tuesday September 7th) included the Island Plan Strategy (in quite some depth), the proposed Road Races which are in the planning stages for 2022, the lack of public transport in rural districts (in particular, Havenstreet), and how easy or difficult it is to get a face-to-face appointment with a GP. According to the latest figures (as quoted by Bob) provided by the CCG, 66% of appointments are now 'in person', although there was some small dispute as to whether this was actually the case or not.

These meetings have proved to be extremely popular with Town, Parish and Community Councillors and are open to all Councillors and Clerks - please contact your Clerk if you would like more information and details of how to be part of these meetings.



Meet the New Councillors

A large number of new Councillors were elected to Town, Parish and Community Councils in May, and over the next few months, we will be hearing from some of them. We start with...

My name is Cameron Palin and I am one of four town councillors who represent the Osborne Ward in East Cowes. Prior to being elected onto the East Cowes Town Council in May 2021, I was co-opted onto the Town Council following a resignation in November 2020. I am also a fully paid-up member of the Green Party of England and Wales, and sit on the local Executive Committee for the Isle of Wight.

My intention to stand for election stems back to 2017 following the election of the Conservative County Council and how local issues were not being dealt with - primarily, the floating bridge and Ryde Arena. The opportunity for co-option in November came as a surprise to me and, of course, I grabbed this opportunity with both hands as I had been planning to run for both the Town, and County Councillor seat of Osborne in the following May.

I stood for election, proudly showing my political colours, making clear my drive for both Environmental and Social Justice. For me, these are two absolute fundamentals that we must stand up for. In East Cowes, I have drafted an Environment Policy, which will set us up for our Neighbourhood Plan, because we must be forward thinking, we must set ourselves ambitious targets and we must tackle the climate and ecological emergency, even at a Town Council level.

Another major reason I stood for election is because the demographic of my community was not being represented. In Osborne, we have many young families, children, teens and young adults who have never had anyone to represent them, that is like them. At the time of my election, I was the youngest councillor on the Island, with a majority on the Town Council that speaks for itself, and narrowly missing out on the County Council seat by just five votes. For me, this showed that people were fed up of the *status quo* and that they liked not only my approach of being open and transparent, but also my ability to deliver in the short time I had been co-opted onto the Town Council.

Over the last four years I have done a lot of 'media outreach' including writing press releases, live and pre-recorded radio (including the BBC, Wave, LBC, Isle of Wight Radio and Capital). I've also done a lot of TV interviews, especially with regional BBC and ITV. I believe this is one of my greatest strengths and I'm not afraid to speak directly with the media and make sure local issues get the attention they deserve.

I am also very aware of Island-wide issues as, since 2017, I have attended the vast majority of Isle of Wight Council Cabinet, Full Council, and Corporate Scrutiny Committee meetings. I speak frequently at these meetings as a member of the public asking questions - most recently at Cabinet and Corporate Scrutiny Committee, about the lack of focus on our UNESCO biosphere status, as well as other issues such as the floating bridge, Ryde Arena, Forest Road, and the Climate and Ecological Emergency.

I look forward to representing IWALC on Corporate Scrutiny Committee for the next year and look forward to making sure IWALC members' concerns are raised. In my new role, I aim to engage with members and consult with them before these meetings as I know there is a diverse range of expertise, but also each Ward has different issues which need raising, and different experiences of particular issues.

I look forward to meeting many more of you in person and hope you are all keeping safe!

Cllr Cameron Palin



We also asked Dave Hardy, one of our longest-serving local councillors, to tell us about his experience, and any advice he might have for new or aspiring councillors. This is what he said:

For What It's Worth!!

If you are reading this you are already a Councillor or want to be one. Before I go any further though, I will be using a few acronyms so I will tell you what they stand for:-

- IWALC. Isle of Wight Association of Local Councils.
- NALC. National Association of Local Councils.
- HALC. Hampshire Association of Local Councils.
- SERCAF. South East region County Associations Forum

There are more, Local Government has a whole bunch of them, but the above are the ones you will come across at the first tier of Local Government. I must state for the reader that I will not be delving into the murky realms of County Councils, my experience is with Town and Parish Councils (First Tier).

I stood for election to Lake Parish Council (North Ward) as well as the County Council seat of Godshill and Wootton, as a Liberal Democrat. I am no longer a Lib Dem, but you can see where I am politically, having stated that, in my humble opinion, politics has no place in the first tier of government.

There are three ways to be elected a T, P or C Councillor.

1. Stand for election and get elected by popular vote
2. Stand and get elected unopposed
3. Co-option

I was elected under option 1 and later, under option 3, for Shanklin Town Council.

Lake Parish Council has ten members, made up by six for the North Ward and four for the South Ward. I represent the North Ward. Lake is a small Council with an electorate of about 4000, and a precept of £87k. We meet monthly, except for August. We have a set Agenda each month.

There are now many new responsibilities that have been passed down by the IW Council to Town, Parish and Community Council control that they never had to think about in the past. For this reason alone, it is a good idea to belong to your Local Association - in our case this is IWALC. The Local Association can use their collective strength to lobby the County Council on your behalf.

OK, so that's Lake Parish Council! By now you may be asking yourself why and what prompted you to put your name forward in the first place - and why you continue to do so every four years! To be honest, I am not too sure, but I will try and give you a sense of why I do so.

This is "what" got me into Local Government in the first place - I can look to Cllr Bob Blezzard as he fired up my enthusiasm and persuaded me to stand for County and Parish Councils. Cllr Rodney Downer wiped the floor with me for the County Council and continues to represent the people of Godshill and Wootton today.

The "why" is a bit more complicated. I can come out with all the usual stuff about serving the community and wanting to make a difference, which *are* all good reasons. We recently had a co-opt meeting at Lake PC and one of the questions asked of the candidates was why you do want to serve on the Council? Some very interesting answers were given which made me think why I continue to serve on the Parish Council and yes, it is basically serving the community and making life a little better for the people we serve.

It was an extreme privilege to be elected to serve the Lake Parish Council as its Chairman for three years, a role I enjoyed carrying out. Each Town, Parish and Community Council is allowed to elect two representatives (one acting as a deputy) to IWALC. I was so elected to represent Lake Parish Council. I was also elected as Treasurer - a post I held for three years.

IWALC has many seats on outside bodies and I was lucky enough to serve on a few of them -

- NALC
- SERCAF
- Healthwatch as one of the Executive Directors which enabled me to serve on the Health and Wellbeing Board
- Trustee of IW Citizens Advice

I hope you have found this to be of interest. As you can see, being a Local Councillor can open many doors - you only must have the will and key to advance through that door and in my opinion, the key is IWALC.

Cllr Dave Hardy (Lake Parish Council)

IWALC Members' Views and Suggestions

We encourage IWALC members to express their views on topical issues. Let us know what you think about the views expressed below.

SAVE THE PLANET

It is clear from the urge by all governments to do away with petrol and diesel cars that to save the planet, the main problem is how we transport ourselves around and the transporting of goods. Following the pandemic, there are many instances where we don't have to travel, which is the main reason for my comment about where workshops and meetings are held.

If there are no laws regarding stopping certain types of meetings being held by Zoom, then they could be.

This would give equal opportunity for councils from all over the Island to attend easily, taking less time out of the day, avoiding parking charges, the use of less petrol and unnecessary contact whilst the virus is still a real concern.



There was a missed opportunity, under the the PFI contract of resurfacing the roads, to add more width to many of the roads, (where the verge-width would allow) and possibly, if there had been the vision to do it, we may have achieved having a cycle-width at the side of some roads as cycling and walking are the only real methods of transport which use no energy.

Over the years we have closed village schools so now children are continually transported about, the Island's road network steers most traffic through Newport - something which has never been addressed, we now have a traffic light system at the B&Q island which must use a vast amount of electric annually in comparison to the old island - which I personally didn't see anything wrong with.

Governments are pinning their hopes on electric cars, buses and motor cycles, with energy coming from a battery to cut emissions. Most new household electrical items are also being driven by batteries. Nearly all hand-held power tools and garden machinery are driven by batteries. Sadly, the older you are the slightly more cynical you become and question what will happen to all these batteries; they certainly cannot go into land fill. Where will all the materials come from to produce the batteries, and the electric needed to charge them?

Recently it was announced there is a shortage of lorry drivers - the question should be asked why do we need so many drivers? We now import far more foods, such as lettuces, tomatoes, apples, potatoes, and many more vegetables - all could be grown locally and transported to local supermarkets. If regulations could be put in place to make supermarkets buy within a certain mile radius for certain goods, the transport then would be more local and shorter distances.

I could fill several pages as there are so many things which could reduce transport, but the realism is that we will have to, in the future, grow away from globalisation and move more back in some way to localisation. The Island has a better chance to move back faster in some capacity, which would be beneficial to the farming community and other business on the Island.

This, more than any time in our lives, is the time for long-term planning in transport, housing, education, producing goods, and the building of an infrastructure for the future which is also likely to involve new sea defences.

I look forward to hearing anyone's views on how we could genuinely reduce the carbon footprint on the Island that are sustainable in the long-term.

Cllr John Cirrone (Brighstone Parish Council)

What is a Lengthsman?

You keep reading in the local papers of the complaints from residents about hedges and verges not being cut, but of course we must protect the flora and fauna. But it got me thinking about the times before we had this unitary authority, and we had the old Borough Councils and Urban District Councils on our Island, and how *they* used to address those problems.

Some of you who have been councillors for some time and have served on some of these old authorities will remember the Lengthsman.

For those that don't know what that is, it was normally a local man who worked on his own, cutting back an overgrown hedge or verge, and maybe clearing a blocked ditch or road gully, under the control of a superintendent or the clerk.

As you all know, the tasks above are now carried out under the current PFI by Island Roads, and this is not me trying to blame them for the problems, and it's difficult to manage a large contract with penalties attached, when you have the whole area of our Island to cover.

So what could be the answer? Town, Parish and Community Councils are being asked by the IWC to devolve down certain services, so if allowed, how could T, P & C Councils take on a task like this? Some councils, like Chillerton & Gatcombe, are very small and don't have a large precept, or staff, and have only a part-time parish clerk.

So my thinking is, if we could cluster the smaller councils together where boundaries cross, we could possibly employ a shared Lengthsman, or woman, to carry out the various works with costs shared by each council.

A point for discussion at an IWALC topic meeting perhaps?

Cllr Peter J Whiteman (Vice Chair, Chillerton & Gatcombe Parish Council)

(A couple of minutes with Google shows that Parish Lengthsmen still exist in other parts of the country... Peter may be on to something!!)

News from Member Councils

Shalfleet Parish Council

The Parish Council is looking forward to marking the Queen's Platinum Jubilee in a number of ways; a local leaflet on footpaths, 70 facts about the parish, and a book on the history of the parish. We are also looking at erecting Parish signs on the parish boundary and lighting the beacon on Wellow Millennium Green on the day.



Shalfleet Parish Council

For many years, residents have had concerns about the sewage treatment works in Shalfleet, and sewage overflow into the creek. At a recent exhibition about building 70 new houses in Shalfleet, more people expressed concern about the increase in sewage generated than building on the greenfield site.

The Parish Council contacted Southern Water for a site visit of the treatment plant which is in a field south of the village. We gathered a great deal of information at the visit, and SW has subsequently sent details of the discharge consents. The Treatment Plant seems to have been built in the 1960s so the design is of that time, but as all the flows are pumped to the site, there is limited risk of untreated sewage getting into the Caul Bourne. The smell definitely stayed with us.

We are still trying to get information about the two pumping stations at Newbridge and Mill Lane, Shalfleet.

Meanwhile the eels enjoy the stream at Newbridge <https://www.youtube.com/watch?v=BkjGY1AgrW4>

Or just google 'youtube eels in Newbridge' for a fascinating view underwater, thanks to Mark Medland.

Station Road, Ningwood now has over 30 patches where leaks have been repaired since it was resurfaced by Island Roads. The Parish Council tried repeatedly to get SW to re-lay the mains before it was resurfaced, but it was not on the list of capital works, so it has not been done. The water supply is regularly cut off, sometimes for more than 24 hours, which is distressing for some of our local residents.

SW local representatives have been very helpful, but it is further up the management structure where we need action and investment.

We are pleased to see the IWC and MP taking on these issues.

Cllr Steve Cowley (Chair)

Sandown Town Council

Sandown's Royal Visit and Commemoration



Sandown Mayor, Paddy Lightfoot welcomed HRH Prince Michael of

Kent to commemorate the Centenary of Sandown War Memorial, as well as the Island's Lord Lieutenant, Susie Sheldon, and the High Sheriff, James Attrill, DL.

Prince Michael met Mark Birch, operations manager of the Sandown & Shanklin Independent Lifeboat, and volunteer crew members, and received a special knitted memento of his visit to Sandown; IW RBL President, Ian Ward, introduced Bill Wyke and Sally McConkey, descendants of service personnel named on the memorial, as well as Island Road's Kenny Snudden, who tends the area around the memorial, and Stuart Kent, bugler from Sandown and Shanklin Military Band.

The visit was completed by meeting the Head of School (Bay CE Primary) and pupils from the school, with school Governors, Rev Williams and Rev Hall, who presented Prince Michael with a set of mugs specially designed by pupils from the school – there was a display of all of the designs, and they are on the website.

Prince Michael then visited the Broadway Centre and presented the Queens Award for Voluntary Service to volunteers from the Community Bus Service, who provide the 24 service to Yaverland, Sandown, Lake and Shanklin (as well as the 22 and 32 services); during his visit he met members of the TWG and local residents that use the voluntary bus service.

Town Mayor, Paddy Lightfoot, said, 'The Town Council have funded special commemorative troughs for the Memorial, (which Green Town Volunteers have planted), and renovated the memorial for the Centenary - a fitting tribute for the sacrifices for those named on the memorial and their descendants.'

The Town Council also worked with the local church to arrange a special Commemorative Church Service on Sunday 25 July 2021, exactly 100 years to the day that the memorial was unveiled.

The service started with a two minute silence, followed by *A Cry For Peace* read by Cllr Andre, readings from IW Vice Lord Lieutenant, Brigadier Maurice Sheen, High Sheriff, James Attrill, and Sally McConkey, whose family names are on the memorial.

There were special plaques highlighting the Centenary, a trowel and scroll that laid the foundation stone of the local church, a tribute to Eric Charles Twelves Wilson VC, (son of a former curate and baptised in the church in 1912), and the TWG provided refreshments to the congregation.

Mayor Paddy Lightfoot added, 'The service paid tribute to those lost during the pandemic, and also provided an opportunity to reflect on the VE and VJ Day 75th anniversaries that were affected by Covid guidance in 2020, and we hope that this year's Remembrance Day event will go ahead safely, as we know how important this is to local residents.'

The Town Council carried out public surveys at the beginning of the year, with residents supporting arranging commemorative events for the centenary of the memorial.

Deputy Mayor, Heather Humby MBE said, 'This has been a memorable week for Sandown, and the cross section of the community involved in all of the events, and we hope the November service can go ahead safely, and then we can start planning for the Queen's Jubilee next year.'

Pictures from the visit of HRH Prince Michael to the Memorial, Commemorative Church Service, and the designs created by pupils from our local school are on the website.

Richard Priest (Town Clerk and RFO)

Photographs of the day on the next page



Prince Michael of Kent meeting Sandown Town Council's Mayor, Paddy Lightfoot, and the Island's High Sheriff, James Attrill



Ian Ward presents the plaque which is the Baptism record of Eric Charles Twelves Wilson VC, baptised at Christ Church in 1912 (Son of the Curate).



IW Vice Lord Lieutenant, Brigadier Maurice Sheen meets resident, Bill Wyke, whose father's name is on the Memorial.

Sue Godden (Dep Mayor, Shanklin TC), Paddy Lightfoot (Mayor), Ian Ward, Sally McConkey (whose family's names are on the Memorial), High Sheriff, James Attrill, Bill Wyke, Brigadier Maurice Sheen (IW Vice LL) and Rev Mark Williams.



Chillerton & Gatcombe Parish Council

It's all happening in Chillerton with their new Hub

I was asked by the previous Chairman, Paul Wells, back in July 2020 to project-manage a small refurbishment of the Reading Room / Gallybagger as the CGCA (Chillerton & Gatcombe Community Association) had about £10k available to do some tidying-up works. However, a small bunch of volunteers got together under the current restrictions and started the works.



The building had had very little major money spent on it through the years, with just general maintenance works to keep it ticking along, but once we got underway, it was apparent that it needed a complete re-wire, new ceiling in the lounge area, some alterations to the bar, reconfiguration of the snooker area and improvements to the toilets - with redecoration and new furnishings, all on a limited budget, but how could we do this?

We were extremely lucky as we found out that the Government's Covid Grants were available to us, the CGCA, which meant we could invest this money in our buildings (which also includes our Village Hall) to improve our facilities for our residents, as this is what we have done.

It's been a long journey for me personally and I am pleased to say we now have created a 'Chillerton Village Hub' at the Gallybagger Inn for the community, and for everybody to enjoy if they are passing through our village, and it was good, on 24th July, to get it finally re-opened and to have a plaque unveiled by Bob Seely MP MBE.

And the latest news is that now we have a new fence around the Village Hall, and the building been re-pointed. So, some good can come out of this pandemic if all Town & Parish Councils and community groups all work together. *Cllr Peter J Whiteman (Chair, Chillerton and Gatcombe Community Association, Vice Chair, Parish Council)*

Lake Parish Council

After a couple of years of discussion, negotiation and supply delays, Lake Parish Council was finally able to switch on its decorative lights in the 'High Street'



(Sandown Rd shops) on 19 August - an initiative to increase the attractiveness of the area and get back footfall.

There are 10 lamp-standard mounted lights, which cost £3650 from Gala Lights - like most such lights they are actually manufactured in France, which caused part of the delay.

Island Roads fitted and connected them up. They are on from sunset to 23.00, so at the moment do not come on until around 20.00, but this will get progressively earlier as winter rolls in.

Mike Taplin (Clerk)



Newport & Carisbrooke Community Council



Our Community Council is currently in the middle of engaging with the draft Island Planning Strategy consultation. With 2,400 more new homes planned for our parish area over the next 15 years - 37% of the Island's planned total - it does seem like we are always the fall-guy in these plans. Over the past decade, the huge Pan Meadows development has been arising (up to 850 homes) and before that, the almost as huge Carisbrooke Meadows. Both on greenfields.

Now the IW Council is planning to put half of our 'fair allocation' at the redundant Camp Hill prison site, right alongside the historic Parkhurst Forest (pictured). Together with planned major development at Newport Harbour, Noke Common and Horsebridge Hill, and Carisbrooke College, our town and village will become even more unrecognisable from the one I moved into 30 years ago.

Of course we need homes. That is 'affordable' rented housing for most Island families who have no chance otherwise of getting on the 'housing ladder'. It's just a pity that it can only come under this government's housing policies via large scale private development.

Cllr Geoff Brodie (Chair)



East Cowes Town Council



East Cowes Community Hub and Library

Phase 1 of work to the new hub and library has almost been completed. This will provide a much-needed facility next to the Town Hall.



Sustainable Climate Change Garden for East Cowes

As well as improving our surroundings, this will also present opportunities for the local community to get involved - getting to know others and spending time out in the fresh air, maintaining the garden. This project, which is in the Planning & Design stage, will be presented to the Council in October.



76th Indonesian Independence Day Celebrations

The event was held in the East Cowes Town Hall for the first time and next year, they will be holding the UK Independence Celebrations, which will be held over two days so that the Island can take part.



Classical Boat Museum, East Cowes

There has been a lot of work going on throughout the pandemic at the Boat Museum which will make a new addition to the tourist attractions for the Island. It will open to the public later this month.

Cllr Michael Paler (Mayor)

Phone Boxes.... What Have You Done with Yours??

Several Councils have taken over the now redundant GPO Telephone Boxes, and we asked this question. Here are the responses so far...

Fishbourne Parish Council

Fishbourne Parish Council has recently taken over responsibility for a phone box on Fishbourne Lane.

We are planning to turn it into a second-hand book exchange, similar to Chillerton and Gatcombe Parish Council's Book Box.

It is a work in progress. So far we have cleared away the brambles which had encroached upon it, cleaned it and installed some shelves - see 'before, during and after' photos. We have also visited Chillerton and Gatcombe to find out how theirs operates. *Diana Conyers (Fishbourne PC)*





The old telephone box in Whitwell has been re-purposed and provides a really good, small library, used by locals and people on holiday.

The library has been lovingly restored by Neil Watkins and the design of it incorporates shelves that are covered in old newsprint.

Whitwell was awarded *The Village Pride Award* in 2017 as a result of the innovative idea.

Niton and Whitwell Parish Council hopes to work with a group of local people in Niton to help transform the redundant GPO telephone box in the centre of the Village into a tourist information point.

Karen McLaren (Clerk)

Left- Neil Watkins gives us a peek inside Whitwell's phone box

ISLE OF WIGHT BEST KEPT VILLAGE AWARDS

It gives me enormous pleasure in informing you that you have been selected as the recipient of the Village Pride Award for 2017 for your innovative idea and ongoing input to provide a library and information leaflets in the redundant telephone box in Whitwell High Street.

Many congratulations on a well deserved honour.

The Award consists of a trophy that you will keep in perpetuity and a certificate.

The Presentation will take place on Thursday 14th September in Newport. An invitation is enclosed. Please feel free to bring along family and friends.

Would you please let me know that you are happy to accept this Award at the earliest opportunity.

I look forward very much to welcoming you and Paul and the girls on the evening and, hopefully, other representatives of Niton and Whitwell Parish Council whom, I sure, will be thrilled that your unstinting service is being recognised.

Yours sincerely,

Ann E.

Ann Evans - Chairman, B.K.V.A.

Chillerton & Gatcombe Parish Council

Several years ago, the Parish Council purchased the redundant Telephone Box which overlooks Chillerton's village green.



It was regularly re-painted and kept in good condition, and then a couple of years ago, a parish resident, Doug Barber, asked the Parish Council for permission to adapt the old phone box and turn it into a 'book exchange.'

Permission was enthusiastically given and since then, especially after the installation of some shelving, anybody has been able to borrow or swap books whenever they wish.

It is also currently used as a collecting spot for plastic milk bottle tops which are being collected for a charity.

Cllr Nigel Phillips (Chair)

Ryde Town Council

The Councillors at RTC have recently given the go-ahead to purchase the Telephone Box in Lind Street in Ryde.



The Town Council, through its social media channels, have involved the local community in ideas and plans for its future. These have included the more elaborate, such as painting faces of famous people, stained glass art, or converting the space to be used as a public shower, along with the humorous – changing room for super heroes or converting the space to use as an Airbnb.

Practical suggestions have included a book swap, a care-and-share box for clothes and toys, a defibrillator, a photo booth, a memory box (voice recordings of people's memories of the area) and advertising space for businesses.

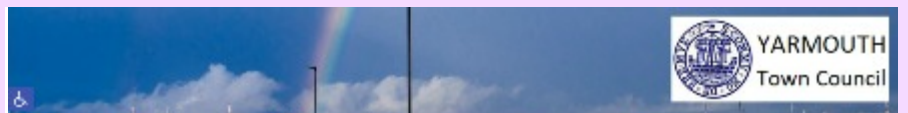
The next step will be to meet with colleagues from County Hall to see which suggestions can be taken forward as the location of the kiosk is in a conservation area.

We hope for some exciting news soon!

Liz Dutton (Administrative Officer)

Yarmouth Town Council

Yarmouth Town Council purchased the telephone box in the town and have used it to mount a montage of historic photos of Yarmouth.



Brian Jacobs (Clerk)

Other News...

Community Action Isle of Wight – Community Resilience project

Project team

In the previous issues of this bulletin we introduced you to four members of the Community Resilience Project team: Julian Wadsworth (Bay Area), Lucy Nicholas (Ryde Area), Adam Tucker (West Wight) and Kay Smith (Cowes Area). Now we would like to introduce two more-

Claire Kennard – Community Resilience Coordinator for the Newport Area (Newport, Shorwell, Gatcombe, Rookley, Goodshill, Arreton)

I moved to the Isle of Wight in 2006 and worked as a community pharmacist for ten years before moving to the Isle of Wight Council to work in projects such as Local Alcohol Action and Shaping Newport. While working there, I discovered a passion for partnership working, community development and regeneration. As the Newport Town Centre Champion, I acted as a visible, single point of contact for the town with the brief to drive positive change. This helped me establish connections and good working relationships with key stakeholders in Newport and beyond which became particularly useful in my role as the Community Resilience Coordinator with the previous Community Resilience project between September 2020 and March 2021.

I am passionate about community development and am always keen to make more connections and support initiatives that enable partnerships and collaboration for the benefit of local communities in my area.

I look forward to working with you for the next 18 months. You can get in touch with me by email: ckennard@actioniw.org.uk

Claire Kennard



Zoryna O'Donnell – Community Resilience Project Manager

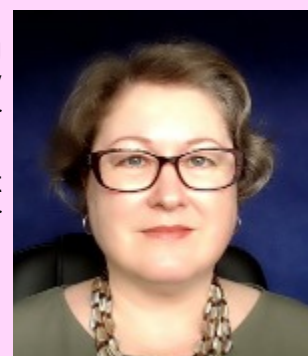
Originally from Ukraine, I moved to the Isle of Wight in 2007 and spent the following nine years working for the Isle of Wight Council. Over the past six years, I used my experience, knowledge and skills to build my own business and to volunteer for several non-profit organisations on the Island.

I had the privilege of managing the previous 6-month Community Resilience project which was successfully completed in March 2021. Together with my team, and other partners, we used the experience from this 6-month project to develop a new project, aiming to future-proof the community resilience on the Isle of Wight by focussing on building the resilience of people, families and organisations.

Thanks to grant funding from the Coronavirus Community Support Fund (CCSF), distributed by The National Lottery Community Fund (TNLCF), we were able to begin the implementation of this project in May 2021.

I am confident that, by working together, we will become even more resilient and will flourish despite the challenges brought about by the pandemic. You can get in touch with me by email: zodonnell@actioniw.org.uk

Zoryna O'Donnell



Building community capacity and resilience skills

One of the key objectives of our project is working to enhance the skills of volunteers who are then, in turn, better placed to support people in the community. With this in mind, we are partnering with other organisations to create learning opportunities for both, volunteers and professionals.

We are delighted to announce that, thanks to the funding from Hampshire and Isle of Wight Public Health, we were able to commission more high quality learning events such as Mental Health Aware sessions (1/2

day), Mental Health First Aid training (2 days) and Suicide First Aid: Understanding Suicide Intervention training (1 day). Please check out our events calendar [attached] for details about these and other learning opportunities which are offered free of charge.

Hampshire and Isle of Wight Public Health also have recently commissioned 1-day Debt and Mental Health Wellbeing training for frontline public sector and community and voluntary sector staff and volunteers. This training is funded through the STP Suicide Prevention programme so it will be delivered free of charge. You can find more details of this training at: <https://escalla.co.uk/debt-and-mental-health-wellbeing-training/>

To book your place on this course: - First, please click on the following link <https://escalla.co.uk/debt-and-mental-health-wellbeing-training/> which will take you through to the course landing page and the course outline.

- Once you are at the landing page, please click on the orange 'Register for an Event' button, which will take you through to the Eventbrite booking page.
- Once you are on the Eventbrite booking page, please click on the orange 'Select a date' button.
- Select which date you wish to attend. If you are having any problems booking your place, please email LA@escalla.co.uk and one of the team will assist you.

Our colleagues at the Isle of Wight Council have secured funding to offer the following excellent (and free) training on Reducing Parental Conflict (RPC) to people in the community who are working with families.

People who would like to enhance their skills in this area can access FREE eLearning. This is training comprises 4 modules that can be completed at a convenient time and at your own pace.

- Module 1 explains the evidence this training is based on and the outcomes for children.
- Module 2 explores how to recognise the signs of parental conflict at the early stages. It highlights how to support parents in finding constructive outcomes which are shown to provide positive lessons for children to learn such skills as negotiation and compromise.
- Module 3 explores how to engage in conversations about relationships and discuss parental conflict. It provides tools and techniques to use with parents to resolve conflict with positive outcomes.
- Module 4 is aimed at people with managerial or supervisory responsibilities

It is expected that people will complete modules 1-3 and that module 4 will be completed additionally only by those who supervise staff.

There is also an opportunity to attend a free 2-day Train the Trainer workshop to be trained to deliver the RPC training to other professionals and volunteers working with families. People aiming to attend the Train the Trainer workshops will need to complete the eLearning first - by 30th September.

There will be two intakes/cohorts trained on the following dates:

- Cohort 1 – 17th September 2021 AND 2nd November 2021 from 9.30 – 4.30 at Westridge Centre, Ryde
- Cohort 2 – 15th February 2022 AND 8th March 2022 from 9.30 – 4.30 at Westridge Centre, Ryde

If anyone is interested in attending the Train the Trainer workshops, please email reducingparentalconflict@iow.gov.uk for more information.

Help with local resilience/emergency response planning

Floods resulting from the recent torrential rains highlighted the need to revisit local resilience/emergency response plans and arrangements. Please remember that members of the Community Resilience Project team are there to help you with this work. You can contact the Community Resilience Coordinator in your area or Zoryna O'Donnell (Project Manager) and we will do our best to help you.

Isle of Wight Chamber of Commerce

Business Expo 2021

The Island's business community can once again come together for a day of business engagement and face-to-face networking.

The IW Chamber's annual Business Expo will see exhibitors from across a wide range of sectors showcasing their businesses at the Lakeside Park Hotel in Wootton on Wednesday 22nd September. Doors open at 10am with free entry to everyone, and the event runs until 4pm. The event is once again supported by headline sponsor WightFibre.



"We're really looking forward to Expo," says IW Chamber Chief Executive, Steven Holbrook. "Not being able to hold our annual event in 2020 was one of the low points of a difficult year. However, times are changing, and as we move towards unlocking and the economy is rebuilding, I'm looking forward to seeing businesses meeting up and engaging with each other once again.

"Expo has always been a hugely popular and essential event for the business community. This year, more than ever, it will help businesses to engage with each other and to reconnect after more than a year of virtual networking. If you're in business on the Island, you should be at Expo. Entry is free and we have some brilliant exhibitors and a great atmosphere for networking. Join us for a great day."

Sign up now to confirm your attendance at Expo! Registering in advance means you'll be helping everybody and making checking in easier on the day itself. We can also keep you updated on the latest Expo news ahead of the event. Click here for more information-

<http://events.r20.constantcontact.com/register/event?oeidk=a07eibzh3mb0508ba92&llr=fplo6bcab>

Emma Spinelli



DUE TO THE **GENEROSITY** OF THE PUBLIC, WE HAVE PLENTY OF -

Cooking Sauces * Baked Beans
* Tinned Fish * Tinned Meat
* Tinned Veg * Pasta *
Cereal * Soup *
Tinned Fruit * Tinned Tomatoes
Rice * Packet Tea *

Thank you

The Queen's Platinum Jubilee Celebrations

For those Councils who may be planning to take part in The Queen's Platinum Jubilee Beacons by lighting a Beacon on 2nd June next year in celebration of The Queen's Platinum Jubilee, this, from Pageantmaster, Bruno Peek, may be of interest to you.

I have pleasure in confirming the following.

(1) The third edition of the Guide To Taking Part in this special tribute to Her Majesty The Queen is available to view and download from www.queensjubileebeacons.com and will continue to be updated on this site at the end of each month through to June next year as more and more communities join the event over the coming months.

From the Guide, you will see the enormous amount of individuals, communities and organisations etc, within the United Kingdom, Channel Islands, Isle of Man, UK Overseas Territories and the Commonwealth that have already agreed to take part, especially as it is likely that this will be the last chain of Beacons being lit during The Queen's reign.

View Guide to Taking Part

(2) As previously outlined, we are also encouraging those that already have permanent Beacon Brazier in place to light them on the night too. It is important however, they register their involvement by going to page 10 of the Guide and provide the information requested in Step 1 as soon as possible to enable us to list your involvement in the Guide during one of it's monthly updates.

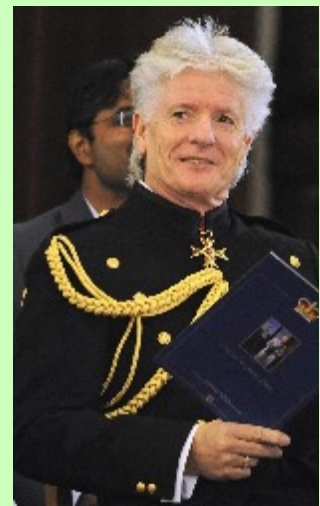
(3) If you go to pages 11 - 14 you will see the various styles of Beacons being used for this occasion. However, pages 11 and 12 show the two styles of gas-fuelled Beacons that are available for this event. They proved extremely popular when used for The Queen's 90th Birthday and Diamond Jubilee Beacons in 2016 and 2012, so if you are considering purchasing one of these, please contact the companies as soon as possible.

We do hope that you will take part again by lighting a Beacon as part of this unique Jubilee, and would be grateful if you would register your involvement as soon as possible, or by no later than 1st June next year to enable us to send your further important information over the next ten months, and wish you all with your planning.

My warmest regards,



**Bruno Peek LVO OBE OPR
Pageantmaster
The Queen's Platinum Jubilee Beacons**



MP Bob Seely's Monthly Report

Southern Water

I, along with some IW Councillors, recently met with the Chief Executive and managers from Southern Water. I called the meeting because we needed to hear from Southern Water about their plans for the future. As a result, Southern Water has pledged to work with the Council and myself to establish best practice on the Island for both reducing sewage emissions and making best use of water. This includes the aim of making the Island a model of sustainable usage. We need to move to a future where, on principle, we do not pump any raw sewage into the seas around the Isle of Wight.

Water quality is a complex issue. Road and agricultural run-off account for some of the nasty stuff that gets into the sea around the Island, so it is not just about the water firms. However, Southern Water needs to step up to improve their own standards and to plan for the future.

I am grateful to Southern Water for talking with Councillors and myself and I would also like to thank all those Islanders that have contacted me about pollution in the West Wight, Gurnard, East Cowes, Seaview, the Bay Area, and other areas.

If any individual parish or town councils would like to talk directly to Southern Water, please let me know and I will pass on details. Since the meeting I have written a follow-up letter to the water company asking them to set out a detailed timeline of their immediate investment plans on the Island.

I am encouraged by what Southern Water say, but what I want to see is detailed plans followed up by actions and I want the Island to exhibit best practice when it comes to wastewater management. I am hopeful that Southern Water will continue to engage with me, and the IW Council, to update us on their plans. We will certainly be following what they do from here with interest to make sure they are held to account for their actions.

Housing

I was disappointed that the West Acre development in Ryde was given the green light by the IW Council. The sooner the Council can agree on a new Island Plan that puts the needs of communities first, the better. With that in mind I would encourage you all to respond to the Island Planning Strategy consultation here: <https://iow.gov.uk/Residents/Environment-Planning-and-Waste/Planning-Policy-new/The-Island-Plan-Review/Surveys-and-Consultations> Now is the time to speak up and help shape the Island's future.

In better news I was pleased that plans to construct 149 houses on greenfield land in Gunville were rejected by the council's planning committee and I thank all those who campaigned against this development including the former and current IW Councillors (John Hobart and Joe Lever respectively), along with Matt Ambrosini speaking on behalf of the Community Council.

I objected to these plans on the grounds that this development would have unnecessarily and irreversibly removed more of the Island's natural green spaces, increased traffic in the area, and would not have met the housing needs of Islanders.

I want us to have an Island Plan that considers the housing needs of Islanders. We need to think more carefully about where we build and who we build for. Sadly, these unwanted greenfield applications continue to come forward and I continue to work with local communities to oppose them.

I have recently objected to plans to build 50 houses in Niton, and seven houses on land to the north of Gurnard Farm. Both applications propose houses be built on greenfield land and in both cases I can't see how they are planned with Islanders in mind. This needs to change. We need a better plan for the Island, and we need a lower housing target, and I am working hard to lobby those who have the power to change these.



Bob Seely (MP)

News from the Isle of Wight Council



£2.8M investment to support small businesses in rural parts of the Isle of Wight and the New Forest

The Isle of Wight Council, in partnership with New Forest District Council, has successfully attracted funding from the European Regional Development Fund to bring a new business support network together. The new project will invest a total of over £2.8M, with ERDF supplying half the funds, and the rest coming from the partner organisations. The project will run until 2023, and will employ professional advisors to help Island people set up and develop their businesses, and provide practical help to do so.

A building in Northwood will be restored and fitted out, to make a place where start-up firms can find a somewhere to work at a reasonable price, as well as support, networking, and resources aimed particularly at those just setting up in business. There will also be a network of small office facilities in other towns on the Isle of Wight and in the New Forest, to allow the services being provided by the Northwood hub to be accessed remotely and reduce the need to commute to work. A programme of business support will be available to give firms access to information, expertise and connections from across the region and beyond. The project will not be giving grant funding directly, but will help Island entrepreneurs understand how they can access all types of business funding if they need it.

Cllr Julie Jones-Evans said: "We have been working towards setting up a business incubator project for some time, and so I am delighted that, with this new funding award, it is finally becoming a reality. Co-working spaces are a model which are proven to help businesses grow and thrive, in an atmosphere of mutual support and inspiration. There are 32 business incubators across the south-east of the country, but none so far on the Island. "This Island hub will have business support spokes going across the Island and New Forest creating a network of support for businesses. We know from our own research that a large majority of those local business leaders who commented to us believe that the lack of an incubator facility is holding back the Island's economy. So for budding Island entrepreneurs currently working off the kitchen table or in the garden shed – good news!"

Are you planning to make your views known?

A new draft of the Island Planning Strategy has been published for public comments. With policies that will affect the environment, housing, business, transport and more, this is one of the most important documents that shapes the way the Island will work between now and 2038.

After an Islandwide consultation in 2018 and 2019, the Isle of Wight Council has made big changes to the proposed plan. The Draft Island Planning Strategy has a greater emphasis on the environment, with more policies aimed at environmental and sustainability issues than any other part of the plan. In another major change, the planned number of houses to be built has been reduced by 25% from the previous draft, after new evidence and information was researched by the Isle of Wight Council. Suggested new 'garden settlement areas' have been removed from the plan entirely, and there is a reduction in proposed building on some greenfield sites. The result is that in the new draft plan only around 1 per cent of the Island is allocated for residential and employment land.

James Brewer is one of the council's planning staff who has been working to prepare the draft Island Planning Strategy. James explained: "It's a big day for us to get this latest draft out for people to see. We listened to what the community told us in the last consultation and that really changed the way we approached some aspects of the plan. Although there's an uncertain national picture in planning, I feel this plan is better, more robust and aims to solve real island issues that the community told us about. We have drafted a plan that should help provide the right homes in the right places on the Island. I would love Island residents to get involved now the consultation is open, because we want to know what everyone thinks of this. It's worth taking a look at the new plan: comments now could affect the way we live on the Isle of Wight for the next fifteen years and beyond. "

Councillor Paul Fuller, portfolio holder for planning and housing, said: "Planning is not just about deciding on individual cases. "Every now and again there is a chance to make some big decisions, and the Island Planning Strategy is one of them. We know that people overwhelmingly rejected the housing numbers in the last draft plan, and the new council is determined to address this. We have listened and responded to that feedback. We're doing a longer consultation than we have to, 50% longer than the legal requirement. This will allow local councils and residents to be part of the consultation process. I hope everybody will take the

time to read the new draft, and pass on their thoughts, because even this latest draft is not the final version and changes can be made - be assured we will be listening."

Grants available to provide free Christmas activities for children and young people

Apply now for grant funding to host free activities for children and young people during the Christmas holidays.

Whether you're a nursery, school, college, youth group or community and voluntary sector organisation, you can apply! The Holiday Activity Fund (HAF) aims to provide healthy food and physical activities for children and young people aged five to 16 who are eligible for benefits-related free school meals during school holidays. Twelve organisations are lined up to take part in the programme over summer, providing a nutritious meal and healthy activities, from horse riding and theatre skills to sports coaching and soft play sessions.

Councillor Debbie Andre, who leads on children's services, education and skills at the Isle of Wight Council, said: "Are you a school, group or organisation that runs activities during the school holidays? If so, why not apply for grant funding to provide some free places for eligible children? The council's team is here to help you through the process and to make it as simple as possible. School holidays can be particularly difficult for families because of increased costs, such as food and childcare and reduced incomes — in many cases made worse by the effects of the COVID-19 pandemic. This means some children and young people are less likely to access organised out-of-school activities and can miss out on the social and health benefits of such activities. By taking part in a free holiday club where a nutritious meal is provided, children who might otherwise miss out, get to enjoy the same enriching experiences as many of their friends and peers."

To apply, visit connect4communities.org or e-mail connect4communities@iow.gov.uk for more information.

Latest Information from Citizens Advice

1. Adviceline Calls

The charity is receiving unprecedented high numbers of calls now through to the 0800 144 8848 number (and some to the old 0344 number!). If a resident comments to you about problems getting through, please advise them that it is because of the amount of calls we are receiving, and that they can...

- leave a voicemail (press * and then 1)
- use the contact form on Isle Help Me available from the CAIW website at <https://www.islehelp.me/contact/> and we will get back to them as soon as we can, but currently it's about five working days.



Outreaches/Appointments

We are not operating at outreaches other than on appointment only based only at County Hall (Mon-Fri), Ryde Library (Mondays), Ryde Aspire (Tuesday mornings) and Our Place, Freshwater (Tues mornings, although this is closed for the summer holidays and not due back until September).

We are not able to promise face-to-face appointments to clients; all clients will be triaged and if it is felt that a face-to-face appointment is needed, they will be invited to an appointment where we have capacity, which might not be at an outreach near to them.

2. AGM

The charity's AGM will be held online again this year at 5pm on Thursday 30th September.

All representatives of local councils are welcome.

Please email deborg@iwcab.org.uk to submit any questions and to get the Zoom link.

3. Cycle ride

The Chief Officer for the charity is cycling from London to Brighton on 19th September to raise £550 for the London Legal Support Trust. The London Legal Support Trust supports law centres and legal advice agencies across London and the Southeast who help the most vulnerable people to combat injustice. Citizens Advice IW has benefited from this fundraising before. You can sponsor Paul here -

<https://uk.virginmoneygiving.com/fundraiser-display/showROFundraiserPage?userUrl=PaulSavillCycle&pageUrl=1>

Paul Savill Bsc (Chief Officer, Citizens Advice)



Valuable not Vulnerable: a world for all ages

October 1st to 29th 2021

Traditionally, across the month of October, in line with International Older Person's Day on the 1st, Age Friendly Island (AFI) have organised the Celebrating Age Festival (CAF), working with organisations and local communities to run a diverse range of events. The 2020 CAF was a victim of Covid and for 2021, it is time to think again.

In line with the World Health Organisation and inspired by Greater Manchester (who developed the phrase Valuable not Vulnerable), AFI are leading on a local campaign to start a conversation around ageism.

Ageism refers to how we think (stereotypes), feel (prejudice) and act (discrimination) towards others or ourselves based on age.' WHO Global Campaign #aworld4allages

Knowing where to start can feel overwhelming and this webpage seeks to reassure and give direction on how local communities and organisations can get involved.

The WHO Toolkit identifies three ways to combat ageism:

- Policy and law can address discrimination and inequality based on age and protect the human rights of everyone, everywhere
- Educational activities can transmit knowledge and skills and enhance empathy
- Intergenerational interventions can contribute to the mutual understanding and cooperation of different generations



So, what could this look like?

Changes to Policy and Law:

- Analyse your staff or volunteer age profile. It can be surprising!
- Work with staff and volunteers in your organisation to assess their experience of ageism. Host open conversations to see how people feel.
- When did your organisation last explore discrimination and develop people's understanding? Sometimes people don't even know they are on the receiving end of discrimination.
- Check your policies are up to date and reflect the current needs of your organisation or group

Educational Activities:

- Plan an arts-based campaign: use photography to capture the breadth of age within your community, use a theme, such as 'Walking in my Shoes' to inspire writing or crafts
- Create a podcast to capture people's experiences of a particular element of life e.g. teenage years

Intergenerational Interventions:

- Plan a skill swap: sewing for digital, cooking for dance, gardening for social media!
- Run a film festival: share films from different eras
- Have a conversation. Use the guide linked below to explore attitudes and understanding among generations

We will also be promoting the work of our Digital Friendly Steering group through Getting Online Week, 18th-24th October 2021. <https://uk.getonlineweek.com/>

How can you get involved?

- Get a conversation going within your organisation or group
- Identify which of the three strands above you would like to focus on
- Plan an event, conversation or activity for October 2021

Let the AFI Team know so we can support and promote!

Digital Friendly Island is a new scheme launching this October to support older people with digital confidence and skills. The scheme has been developed by Age UKIW in partnership with older people and Island organisations. The aim is to make the Isle of Wight digitally inclusive for everyone but especially older Islanders.



Digital inclusion is integral to the successful delivery of a range of council services, supports third sector resilience and efforts to increase digital inclusion across health and care. The Digital Friendly Island scheme will encourage organisations to collaborate, share best practice and work together to support older people with digital inclusion. Strengthening partnership working will have such an invaluable impact in bridging the digital divide.

A number of Town and Parish councils have already signed up to the scheme to indicate they offer a service that is digitally friendly for older people, such as an accessible website or showing they have the intention to update the website with older people in mind. Or perhaps you have an email newsletter that you could design to be age friendly.

Together we can continue to make the Island an age-friendly and digital-friendly community.

Please get in touch with Nell Riches at Age UKIW to sign up: nell.riches@ageukiw.org.uk

Helen Lewis & Nell Riches

The Latest Information from Southern Vectis

We're tracking at around 85% of passengers compared to what we would expect.

We're seeing very minor week-on-week increases, largely led by people returning to the workplace after working from home, but it is this key commuter market that we're still seeing our lowest rate of recovery from.

Tourist numbers travelling are strong and our open-top buses are as popular as ever.



Buses remain a clean, safe options for travel. *Richard Tyldsley (General Manager)*

News & Warnings from Trading Standards

This is a warning from Hampshire Police, we haven't received any local reports of this type of scam however it won't take much for the scammers to hop across the water and prey on Island residents.

We are urging those selling high value electrical items online, particularly on Facebook Marketplace, to be vigilant following a number of reports where people pretending to be 'buyers' have walked away with the goods after convincing the seller they have paid via bank transfer.

There have been a total of 21 incidents since August 14 across Hampshire.

Laptops, mobile phones, tablets, games consoles, a drone and a watch are amongst the items stolen, ranging in price from £370 to £3400.

Those pretending to be 'buyers' have answered a seller's advert quickly and when they have turned up to collect the items, they have then convinced the buyer they have transferred the money by showing them the transfer on a banking app. When the sellers have said they can't see the money in their account, the 'buyers' have convinced them it will appear soon and have left with the goods.

On some occasions, the 'buyers' have taken a photo of the seller on their doorstep and asked them to produce ID.

We know online buying and selling sites are really popular and are a great way to trade second hand items, however we want to remind people to please be vigilant when selling items in this way.

Our advice would be:

- Always check and be completely satisfied the money is in your bank account before you hand over the goods. Genuine buyers will accept that this is correct practice
- Have someone with you at home when prospective buyers attend, or arrange to meet them in a public place
- You do not need to show anyone ID. There should be no reason to pass over your personal details / ID to a prospective buyer
- If you believe someone has attempted to scam you in this way, please try and note down a description of the people involved or vehicle they travelled in and make a report.

Trading Standards have a few more unusual scams to warn you about -

1) We were contacted by a resident who had lost his cat and reported it on various lost pet websites. He received a phone call from a gentleman who told him that the cat had been found and had x rays and been checked over by a vet.

He asked where he could collect the cat from and was told he had to make a payment first and to give his bank details. Thinking this was strange he asked for the name and address of the vet so he could contact them himself at which point the caller got very defensive and put him on hold for 6 minutes "whilst he talked to the vet!"

This is believed to be a scam with his information being harvested from one of the lost pet sites. This is very likely to be an attempt at a scam – preying on somebody who had lost a beloved family pet – in any circumstance stop and think before handing over card or bank details.

2) Residents are being warned against a new 'vishing' email scam. The email appears to come from big name brands – such as Amazon or Paypal – and claim that a large purchase has just been made on the victim's account. The email appears to use official fonts and logos. It also contains no easy way of stopping the purchase from going through, with the only option to cancel things by calling a telephone number. There is



also a message that reads, "If you didn't make this purchase, please call us."

Anyone tricked into dialling the contact details will then be put through to a real person on the other end of the phone. The person will be a scammer, who will try and steal as much information as possible including account names, passwords and bank details.

A couple of scams targeting Island businesses have been reported so please be wary of-

3) Callers purports to be from the High Court Enforcement and claims there is a CCJ against your company. He is calling from a mobile and is very vague around any information he has due to GDPR!

This is highly likely to be a scam aimed to intimidate businesses into paying money or handing over banking details. DO NOT respond, hang up straight away - no legitimate organisation would contact you in this way.

4) Calls from companies that want you to advertise in their brochure; they quite often claim to be providing a service such as working to prevent crime and make the Island a safer place.

These brochures very often don't exist and your "advert" will go nowhere. Don't engage with anyone that contacts you to promote something – take a step away and take time to think.

Report any suspicious activity via our online reporting tool-

<https://www.hampshire.police.uk/ro/report/fo/v1/fraud/>

Sally Ash (Fair Trading Officer)



Updates from Hovertravel

Hovertravel had a busier August than expected, thanks to events such as the Victorious Festival, the Portsmouth Football match charter and The Scooter Rally. The team were also fundraising for Wessex Cancer Trust by jumping out of planes and completing a treadmill challenge for Walk The Wight.



Hovertravel's short journey, quick turnaround and two craft fleet means that extra services can be added as demand dictates, and going forward this flexibility will help customers whether they are extending their summer staycations or starting to return to working in the office.

Our HoverFest event celebrates the start of the Isle of Wight Festival with music in the terminal, staff dressing up and a party atmosphere and we are promoting our extra early services for the Great South Run next month.

Stephen Forster (Creative Director)

Hampshire Constabulary

Changes have been made to the laws concerning number plates which you may find it interesting, it's also to give you a heads up as the law changed on the 1st of September, banning some things and officially allowing others.



Let's start with some basics of a number plate;

HW20 ABC

The first 2 letters identify the county the car was registered in, HW is unique to the IOW. The next 2 numbers are the year it was registered, including which half, it would be 20 for March - August and 70 for September - February. The last 3 letters are random.

You can not re-arrange the letters, numbers or spacing to create names/words.

The EU flag will no longer be added to the number plate, for obvious reasons. Did you know that you can't have your own custom picture? Graphics are limited to a few flags or national identifiers.

3D/4D lettering is allowed, the text has to be one specific black colour and a standard size. You can't use different effects/colours to make them look more 3D or use 2 tone colouring to give them a carbon fibre look. The new number plate will be made out of different material. It will be more durable and more reflective.

Question - Why can't I have the numbers and letters arranged in the way I want them?

It has been this way for uniformity. It is to make it easier for the public to read at a road traffic incident and for ANPR cameras to check you have tax, insurance etc. ANPR is also used at a car park so it can tell the time you entered and can charge you for parking. We all need to have a specific vision requirement to drive. An edited plate, for example in italic could make it hard for someone to read.

If you have an edited plate then you can only use it in a private place and not on the public road network.

Personal number plates

If you wish to, you can buy a private licence plate. The costs of this differ massively depending on how many letters/numbers, if it makes a word or something meaningful to you.

You also can't re-arrange these letters/numbers or squash them together to spell out a name, they need to be just the way you bought them. There are very specific spacing and sizing requirements.

What could happen if you have an illegal licence plate?

Your car won't pass its MOT with illegal plates. It could invalidate your insurance. It would be worth checking the small print of your policy. It could mean if an officer stops you and we find out that it invalidates your insurance, we will seize your car and you will be liable to points and a fine.

The DVLA may rescind your number plate - all of that money spent on a customized plate will mean you could lose it forever. You could also lose your standard plate if you have edited it, then you will need to buy a new one for your car.

You could be issued with a £100 ticket and up to a £1,000 fine if the matter goes to court. The law is currently being reviewed to add three penalty points to your licence, along with a fine. If you are in an incident, it could be an aggravating factor at court against you. It's just not worth it, if you use a normal number plate you have nothing to worry about.

Other Stuff

A number plate needs to be fixed to the vehicle and not in the window. It needs to be clean with no obstructions, as this is also an offence.

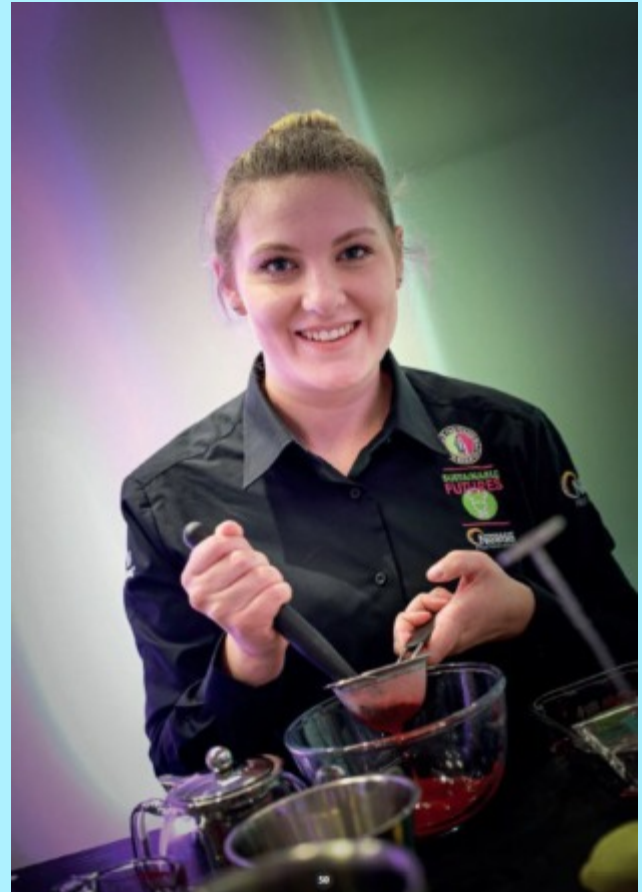
Motor bikes only need one plate to the rear. I have seen some interesting ones recently that are so small you can't read them or they have been replaced with a sticker.

More information can be found here;
<https://assets.publishing.service.gov.uk/.../vehicle...>

Sgt Radford

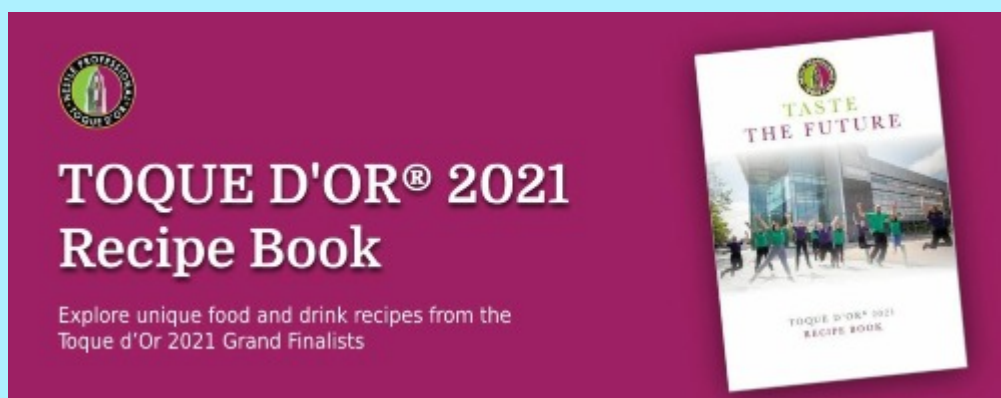
2021 Nestlé Professional Toque d'Or® competition

You may recall from the May bulletin that two of our hospitality and catering students had made it through to the **grand final of this national competition**. The 12 finalists went head-to-head in a week of challenges, performed both virtually and in person at the Nestlé Professional Gatwick headquarters, and I am delighted to report that **both of them were national runners-up!**



Marc Barker – Front of House Student Finalist **Jess Metcalf** – Front of House Apprentice Finalist

The challenges which they had to complete in the competition final focused on creating a Toque d'Or recipe book 2021, "Taste the Future", which can be downloaded [here](#).



As we start the new academic year I am looking forward to sharing with you lots of photos and updates on the exciting activities undertaken by this year's students and apprentices.

Debbie Lavin, Principal